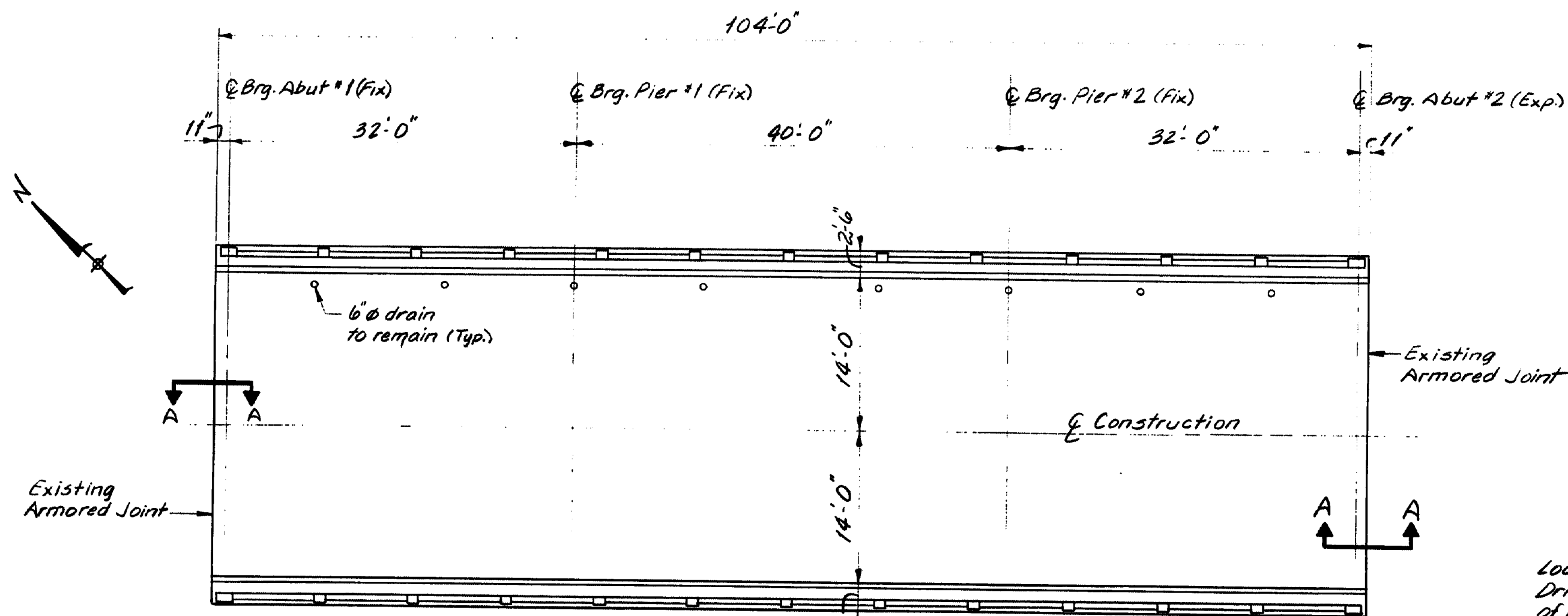


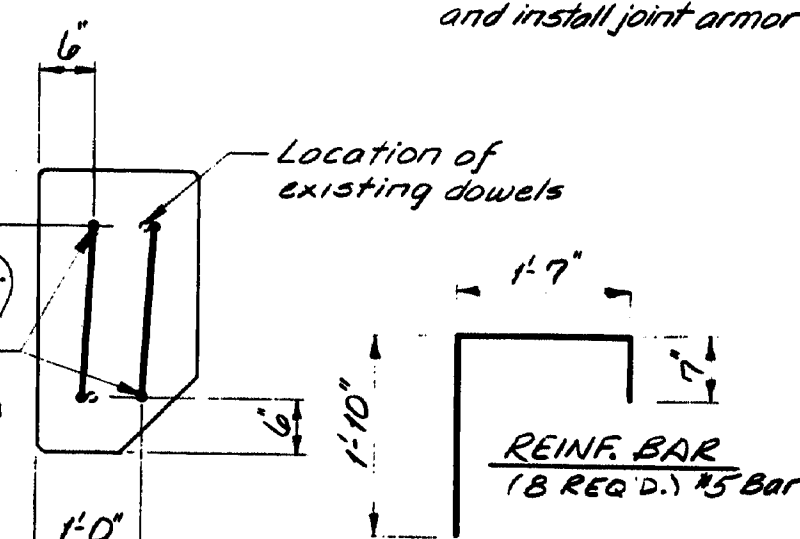
PRR & RES. NO.	STATE	PROJECT NUMBER	SHEET NO.	TOTAL SHEETS
1	MAINE	6025	1	1



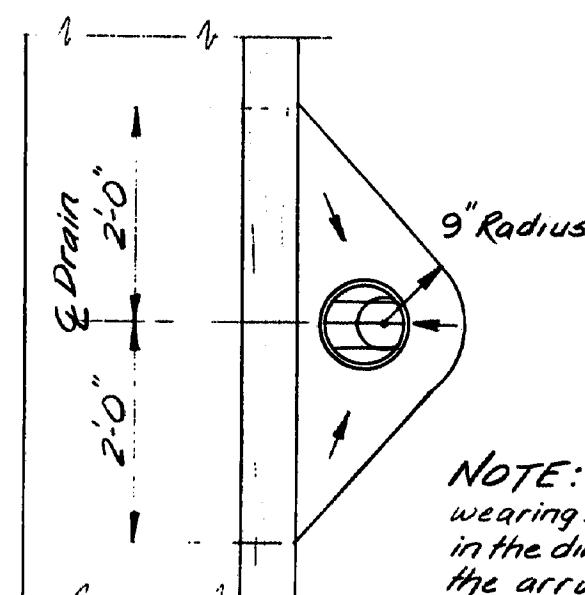
TEMPERATURE ADJUSTMENTS										
Temp °F	0	10	20	30	40	50	60	70	80	90
Opening @ Abut #1	1"	1"	1"	1"	1"	1"	1"	1"	1"	1"
Opening @ Abut #2	2 1/8"	1 7/8"	1 7/8"	1 7/8"	1 7/8"	1 7/8"	1 7/8"	1 7/8"	1 7/8"	1"

NOTE:
Remove concrete as necessary to install the 1/2" plate w/ anchors. Care shall be taken under railpost. Clean reinf. before placing new concrete.

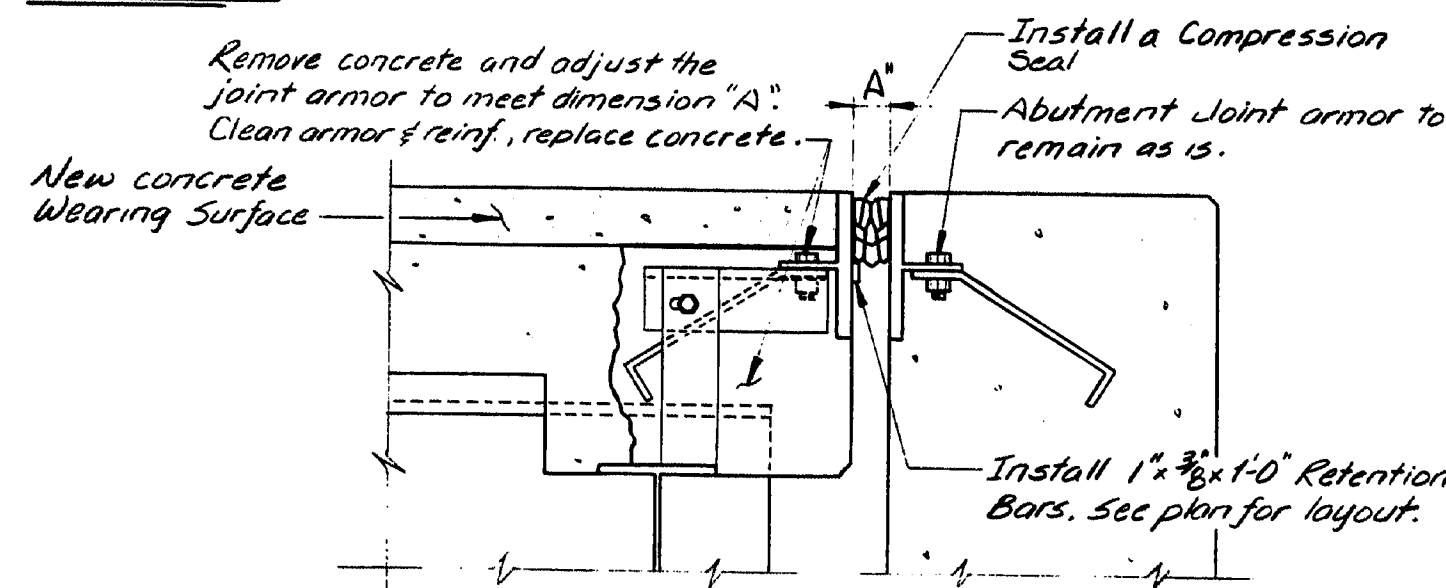
Location of new dowels. Drill & Grout long leg of reinf. bar into a 3/8" hole 1'-3" deep. Tie free end onto exist. dowel.



TYPICAL JOINT DETAIL @ CURB



DRAIN DETAIL



SECTION A-A

BONDING GROUT NOTES

The deck surface must be thoroughly sandblasted and cleaned to remove all dust or loose materials immediately before bonding grout is placed.

Deck surface to be surface dry with no standing water in pockets or low areas when bonding grout is applied.

The bonding grout shall consist of equal parts by weight of Portland Cement and concrete sand with the plus #8 material removed and mixed with enough water to give a thick, creamy consistency.

Bonding grout to be evenly broomed onto the concrete surface ensuring that the entire surface, including face of curb to the finish grade of the wearing surface, is coated and that no excess grout collects in low spots or pockets. Grout shall be thoroughly broomed under and around reinforcing bars.

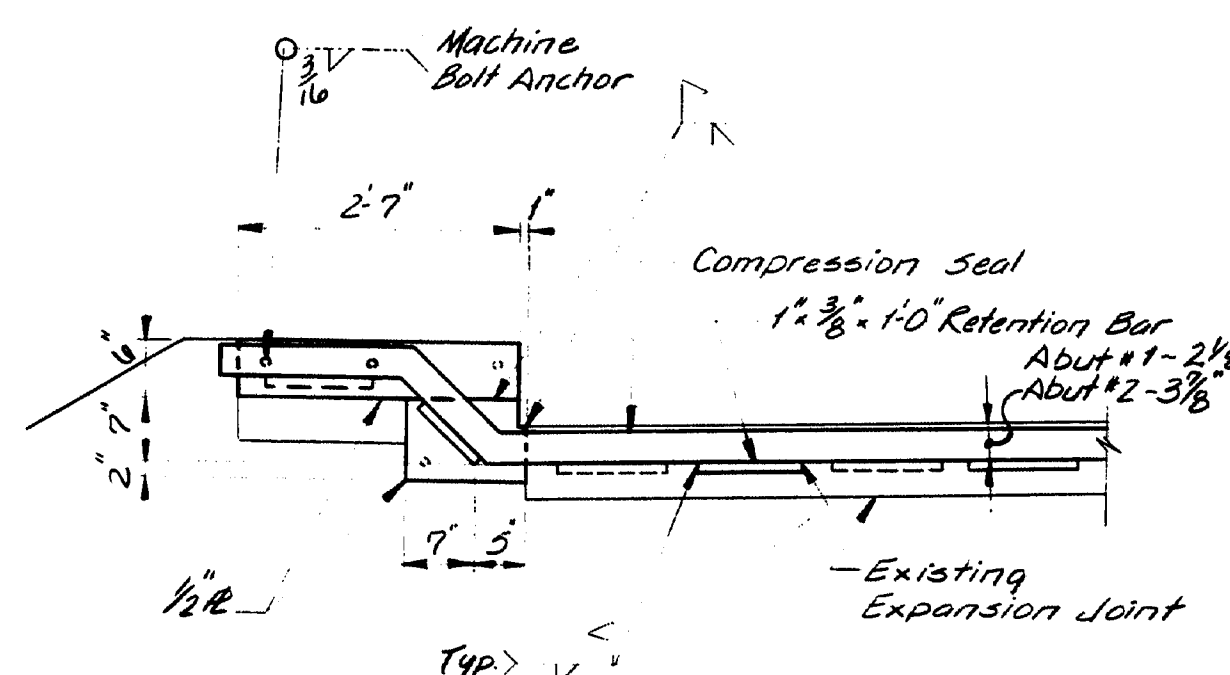
Rate of application must be controlled so that the grout does not dry before the new concrete is placed.

GENERAL NOTES

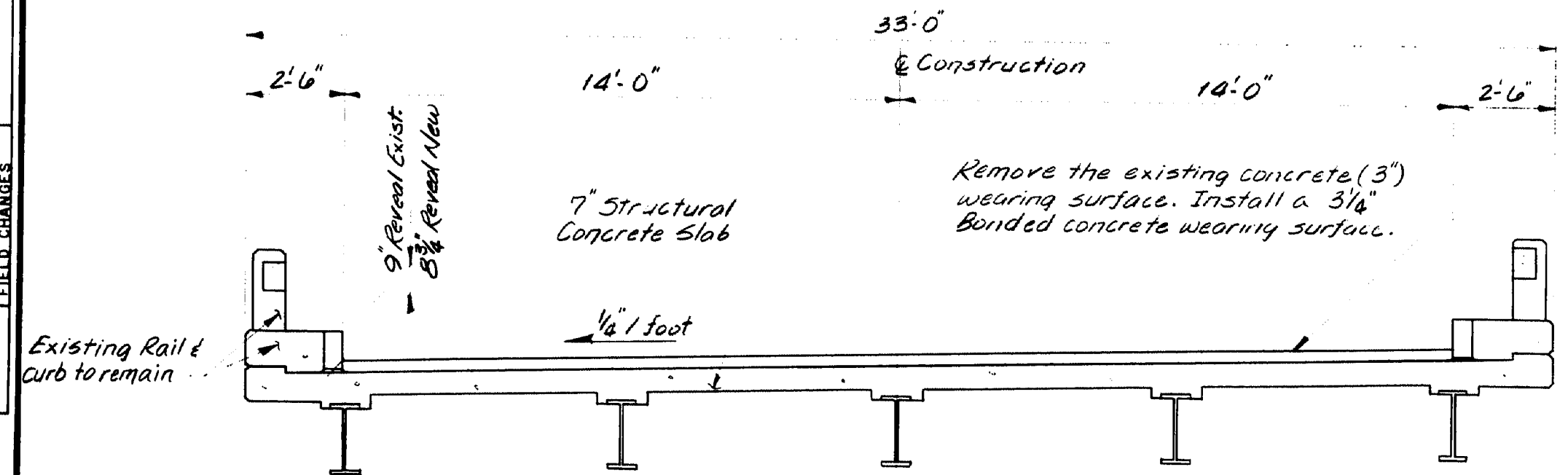
1. Remove existing wearing surface.
2. If main reinforcing steel is exposed, concrete should be removed under the steel to a depth of 1" minimum.
3. Blast clean the slab before any placement of bonding grout or concrete. Note: SLAB IS TO BE SURFACE DRY BEFORE PLACEMENT OF BONDING GROUT.
4. Broom on a layer of bonding grout just prior to placing concrete. See bonding grout notes this sheet.
5. Concrete to be cured using burlap and water.
6. Concrete to be Class AA and aggregate to be crushed ledge.
7. Minimum cover to be 2" unless otherwise noted.
8. Chamfer all exposed edges of concrete 1/2" unless otherwise noted.
9. Any exposed concrete shall be thoroughly cleaned before placing new concrete.

SCOPE OF WORK

Remove existing concrete wearing surface and install a 3 1/2" bonded concrete wearing surface. Install a compression seal as shown at both ends of the bridge.



ELEVATION B-B



TRANSVERSE SECTION

MATERIALS LIST

- 8 - 1'-0" x 1/2" x 0'-9" Steel Plates
- 8 - 2'-7" x 1/2" x 0'-6" Steel Plates
- 32 - 1/2" x 6" Machine Bolts
- 52 - 1" x 3/8" x 1'-0" Retention Bar
- 1 - Compression Seal for Abut. #1 x 35'-0"
- 1 - Compression Seal for Abut. #2 x 35'-0"

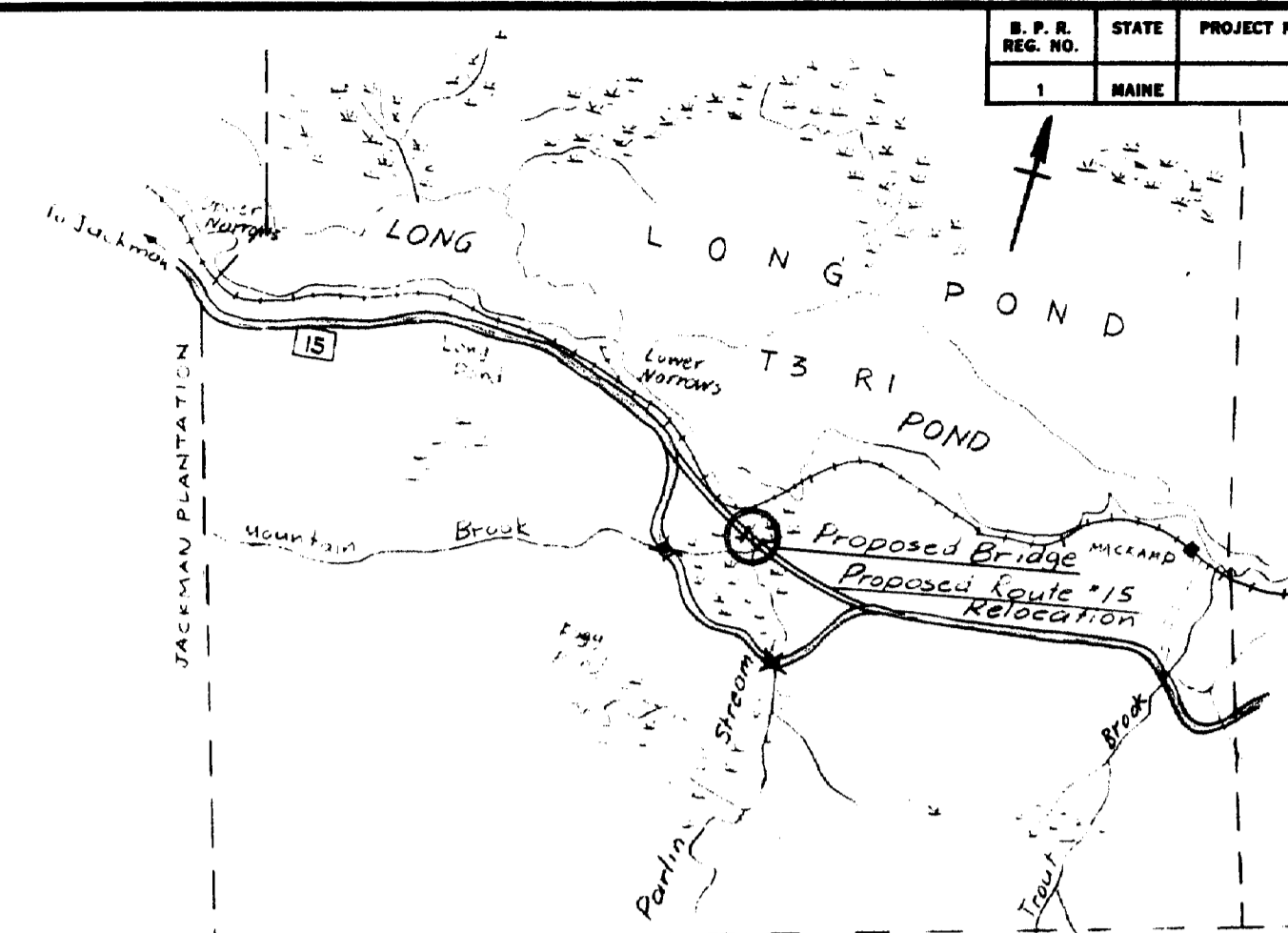
STATE OF MAINE
DEPARTMENT OF TRANSPORTATION

PARLIN STREAM BRIDGE NO. 2
IN
LONG POND
SOMERSET COUNTY

GENERAL PLAN

111-54

PROJECT DESIGN ENGINEER	BY	DATE
PLANS		
DESIGN - DETAIL		
CHECKED		
REVISIONS		
FIELD CHANGES		



LOCATION MAP
SCALE 1"=1 MILE

INDEX OF SHEETS

- 1- General Plan & Elevation
- 2- Foundation Survey
- 3- Survey
- 4- Survey
- 5- Abutments
- 6- Piers, Bidding
- 7- Structural Steel
- 8- Superstructure
- 9- Reinforcing Steel

Standard Sheets:
(BD 101-62) Building Pedestals
(BD 104-62) Diaphragms, Armored Joint
Shear Connectors, Brains.

Standard Detail (2)

SPECIFICATIONS

DESIGN: AASHTO Standard Specifications for Highway Bridges 1961, with Interim Specifications 1961, 1962.

CONTRACT: State of Maine, State Highway Commission, Standard Specifications for Highways & Bridges, Revision of Jan. 1956 and Supplemental Specifications.

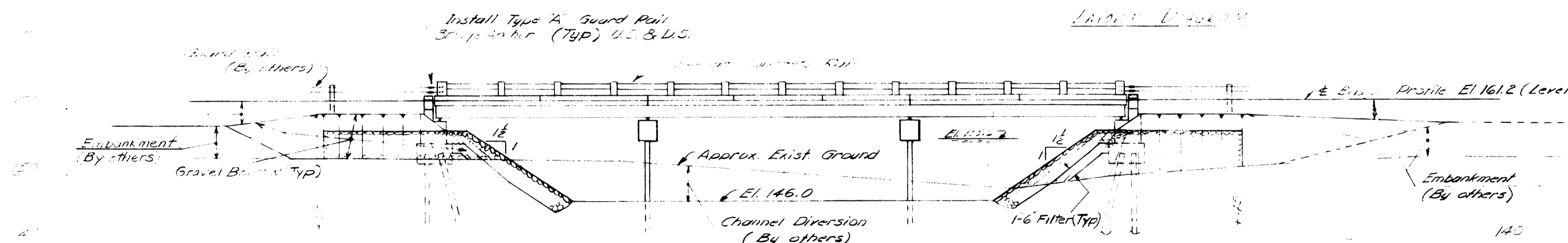
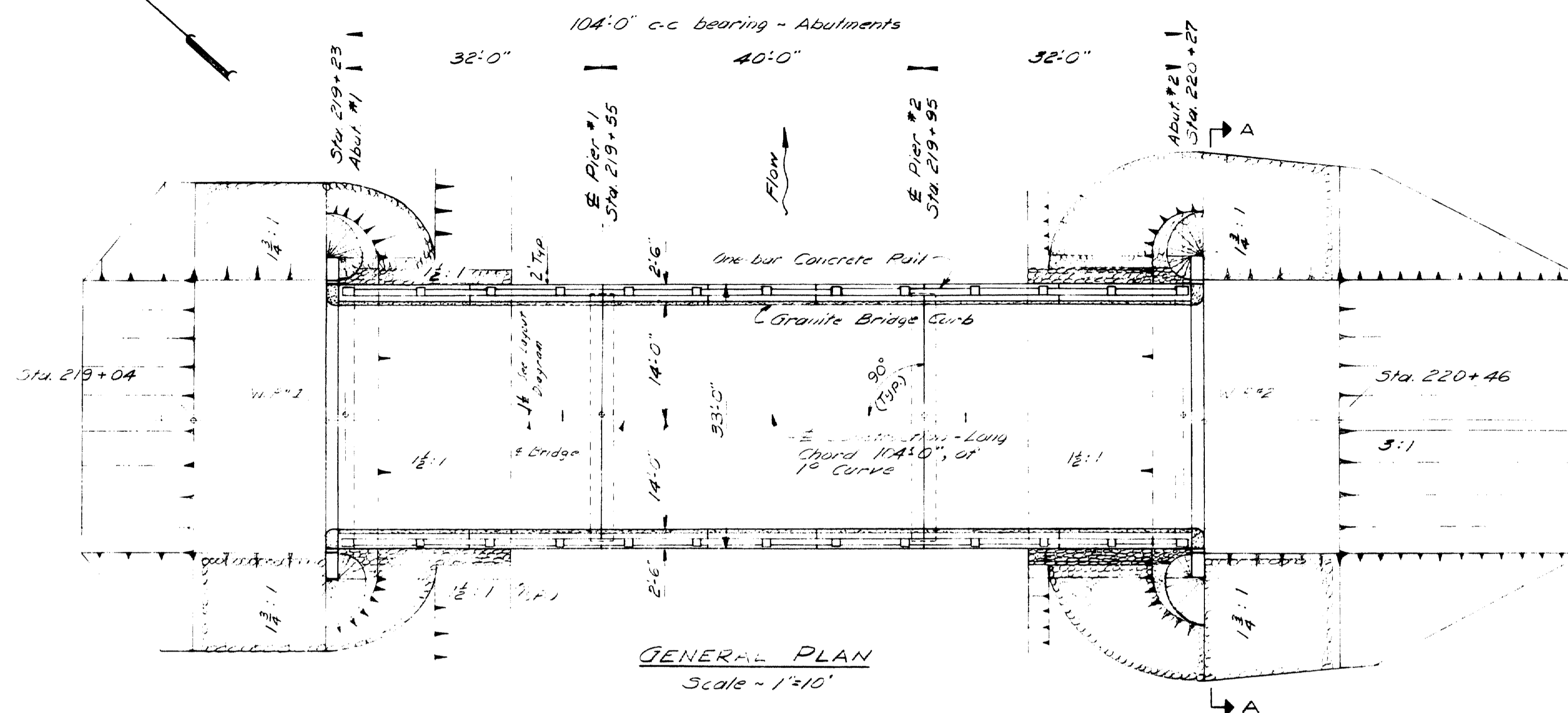
LIVE LOADING: H20-44

ALLOWABLE STRESSES:

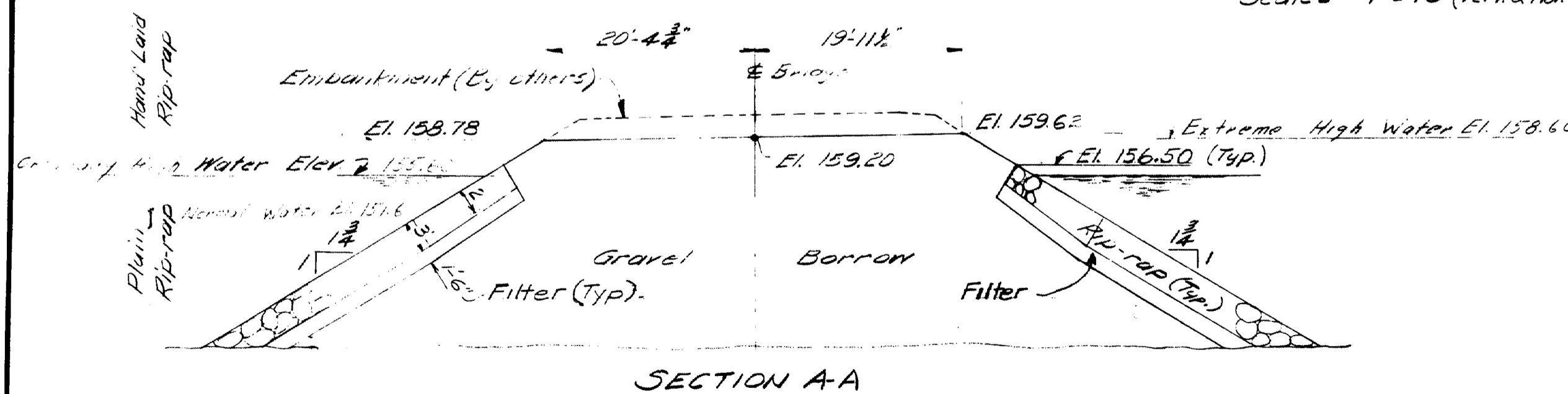
Concrete (n=10) $f_c = 1200$ psi.
Reinforcing Steel, Intermediate Grade A-20, 60,000 psi.
Structural Steel, A36, 20,000 psi. (A7-15,000 psi.)
Incorporate Allowable Stresses and Stresses shall conform to the latest revision of the AASHTO and ASTM Specifications.
All other structural steel shall conform to ASTM Specification A36 or A572.

CONCRETE CLASSIFICATION

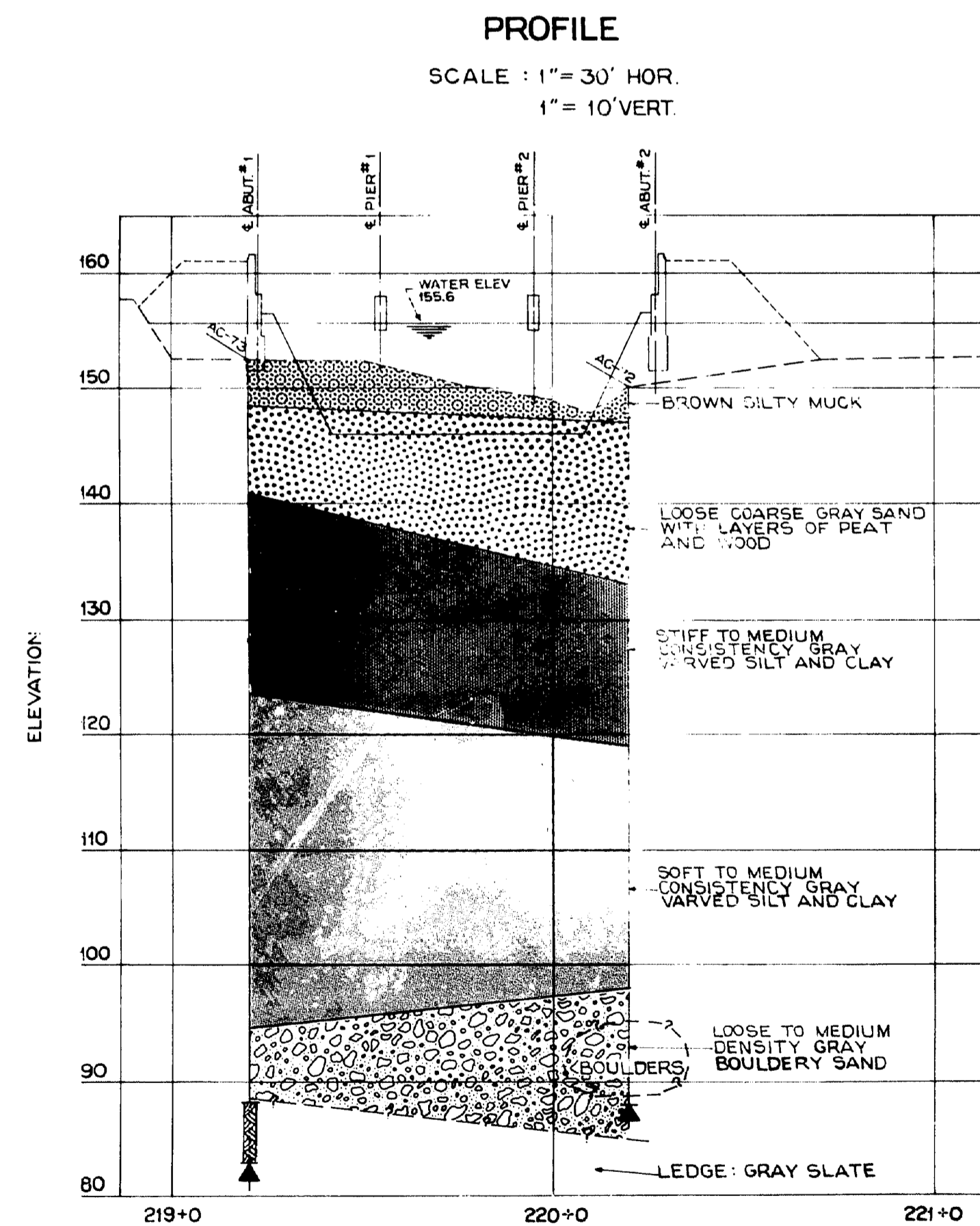
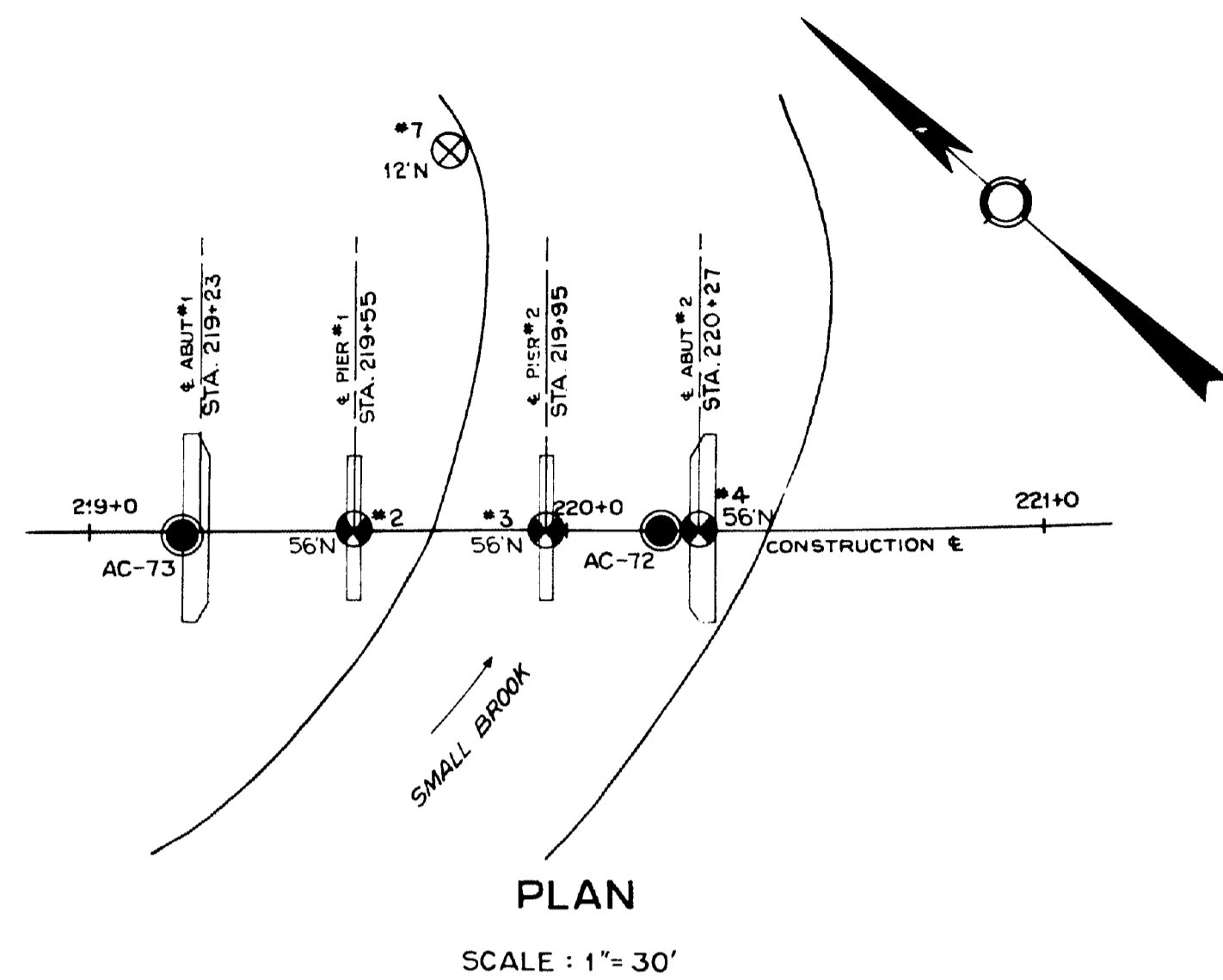
Rail - Class "Y"
All other concrete - Class "A"



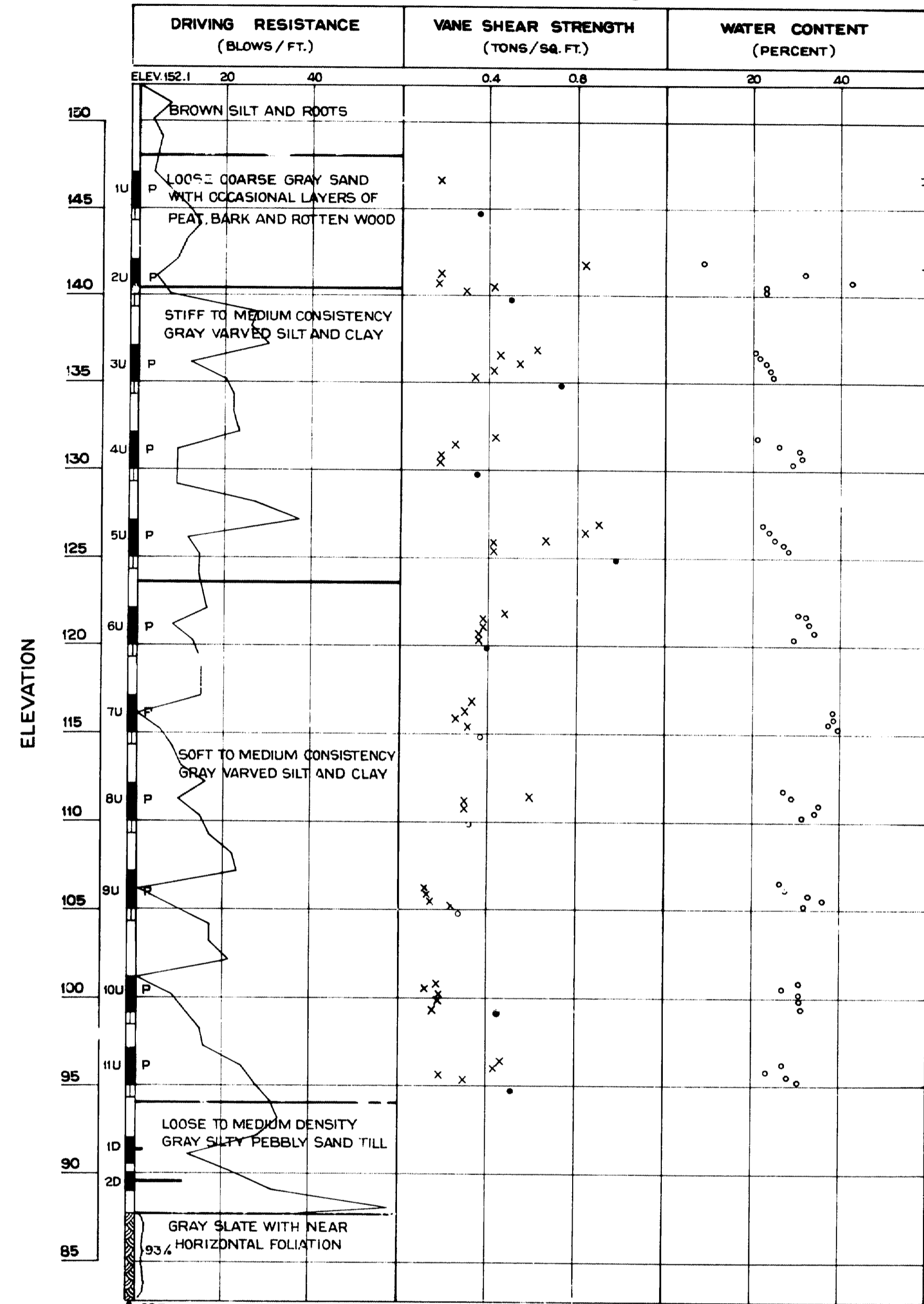
Note: Payment for any optional channel excavation necessary for construction of the bridge shall be made under Item 204-12 Structural Earth Excavation Footings and Retaining Walls.



DET.-G.W.C. TRACE- CHECK-A.B.F.	BRIDGE NO. SURVEY- PLOT-
STATE HIGHWAY COMMISSION BRIDGE DIVISION	
PARLIN STREAM BRIDGE NO. 2	
IN THE TOWNSHIP OF LONG POND SOMERSET COUNTY	
GENERAL PLAN & ELEVATION	
SHEET 1 OF 9 AUGUSTA, MAINE AUG. 1963	



BOR. AC - 73 STA. 219+20 1' RT.

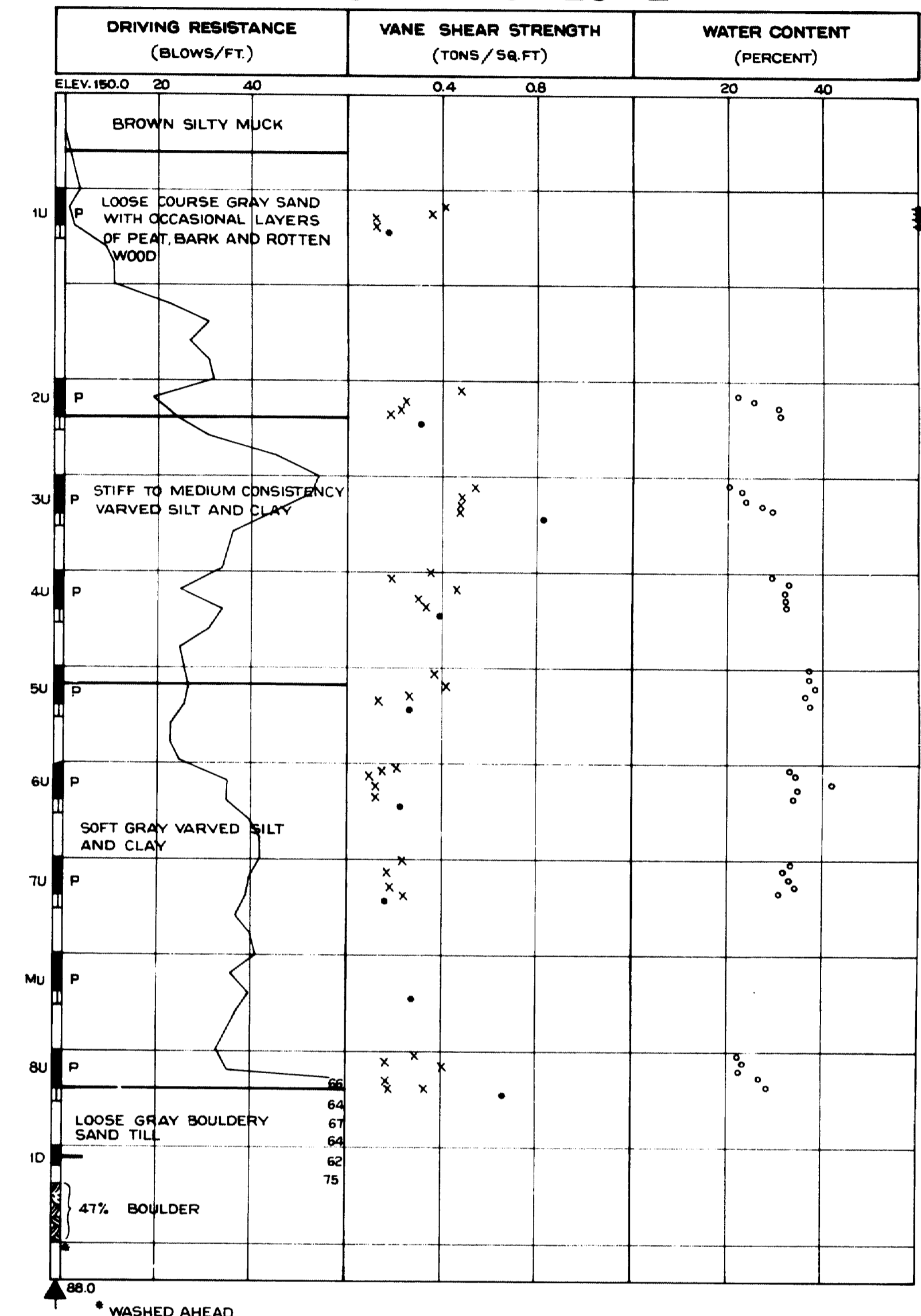


BORING NOTES
 NUMBER OF BLOWS REQUIRED TO DRIVE EXTRA HEAVY CASING ONE FOOT WITH 400 FT. LBS. OF ENERGY PER BLOW
 LOCATION OF SAMPLE OR SAMPLE ATTEMPT
 S & H SAMPLER #1290
 3 1/2" O.D. 16 GA. SEAMLESS TUBING
 NUMBER OF BLOWS REQUIRED TO DRIVE SPOON OR TUBING ONE FOOT WITH 350 FT. LBS. OF ENERGY PER BLOW
 PISTON SAMPLER
 FIELD VANE TEST
 BOTTOM OF BORING (MAY NOT BE BOTTOM OF SOIL STRATA)
 LOCATIONS CORED BY DIAMOND BIT AND PER CENT RECOVERY OF ROCK

SHEAR NOTES
 FIELD VANE SHEAR STRENGTHS
 LABORATORY VANE SHEAR STRENGTHS
 SHEAR STRENGTHS IN EXCESS OF CAPACITY OF EQUIPMENT

WATER CONTENT NOTES
 NATURAL WATER CONTENTS, GIVEN AS PER CENT OF DRY WEIGHT

BOR. CT-72 STA. 220+20 C



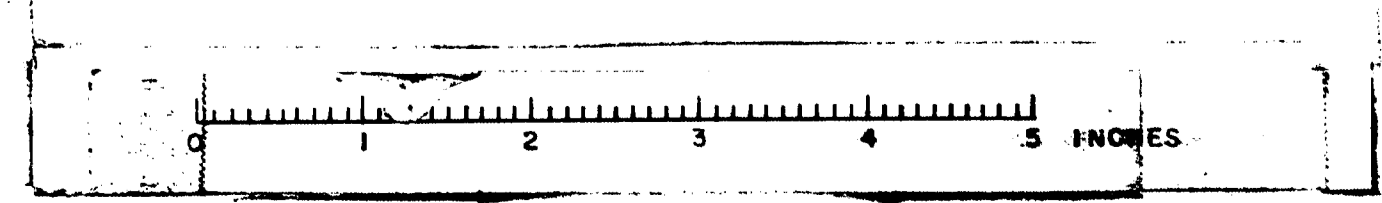
NOTE: BOTH CASINGS FOR THE ABOVE BORINGS ARE 4"

STATE HIGHWAY COMMISSION
 BRIDGE DIVISION
PARLIN STREAM BRIDGE NO. 2
 IN THE TOWNSHIP OF
LONG POND
 SOMERSET COUNTY
 FOUNDATION SURVEY

SHEET 2 OF 9 AUGUSTA, MAINE

S. P. R. REG. NO.	STATE	PROJECT NUMBER	SHEET NO.	TOTAL SHEETS
1	MAINE			

DESIGN— TRACE— CHECK—	BRIDGE NO. SURVEY— PLOT—
STATE HIGHWAY COMMISSION BRIDGE DIVISION	
PARLIN STREAM BRIDGE NO. 2	
IN THE TOWNSHIP OF LONG POND SOMERSET COUNTY	
SURVEY	
SHEET 3 OF 9 AUGUSTA, MAINE	

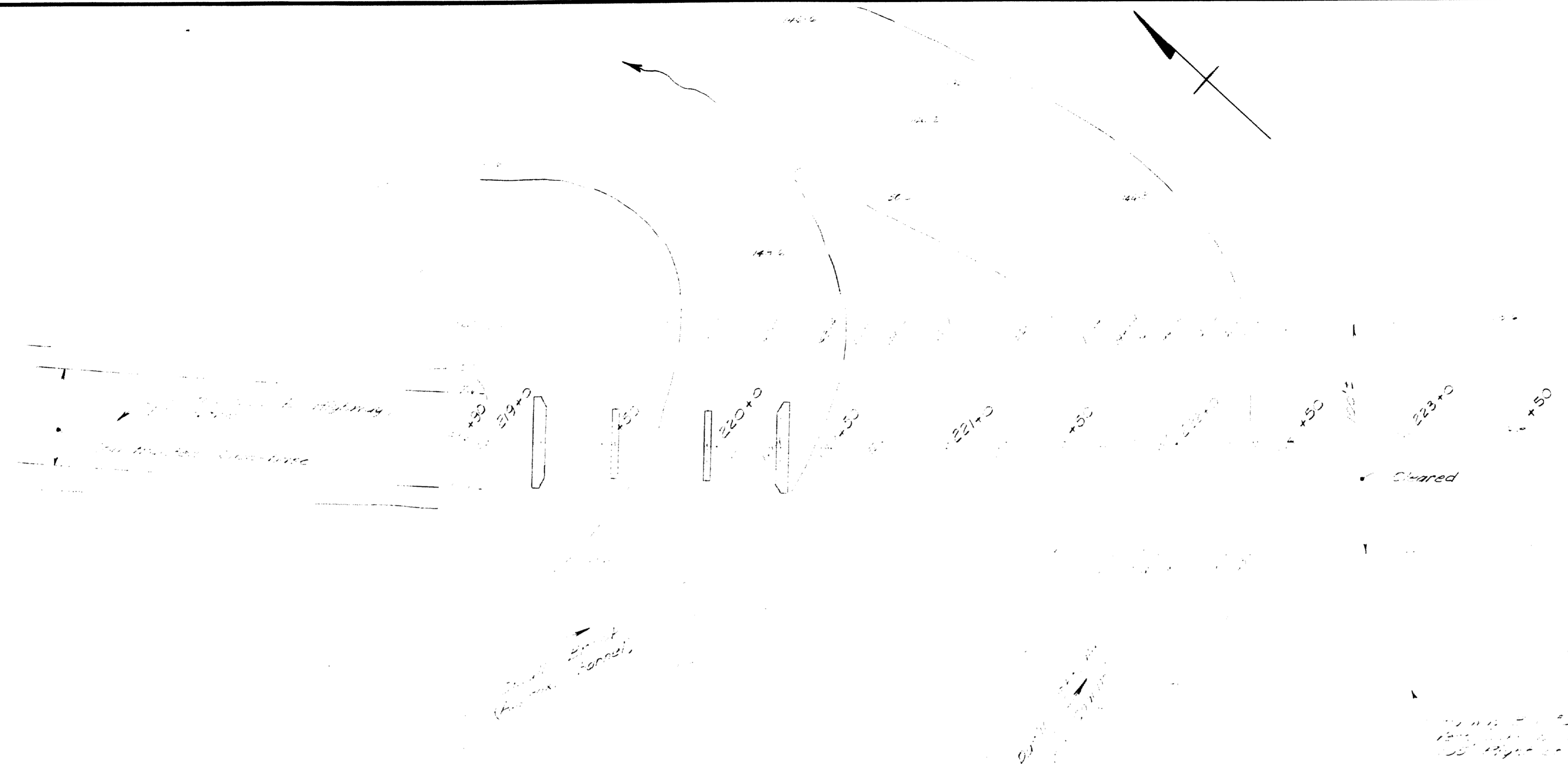


91-59

B. P. R. REG. NO.	STATE	PROJECT NUMBER	SHEET NO.	TOTAL SHEETS
1	MAINE			

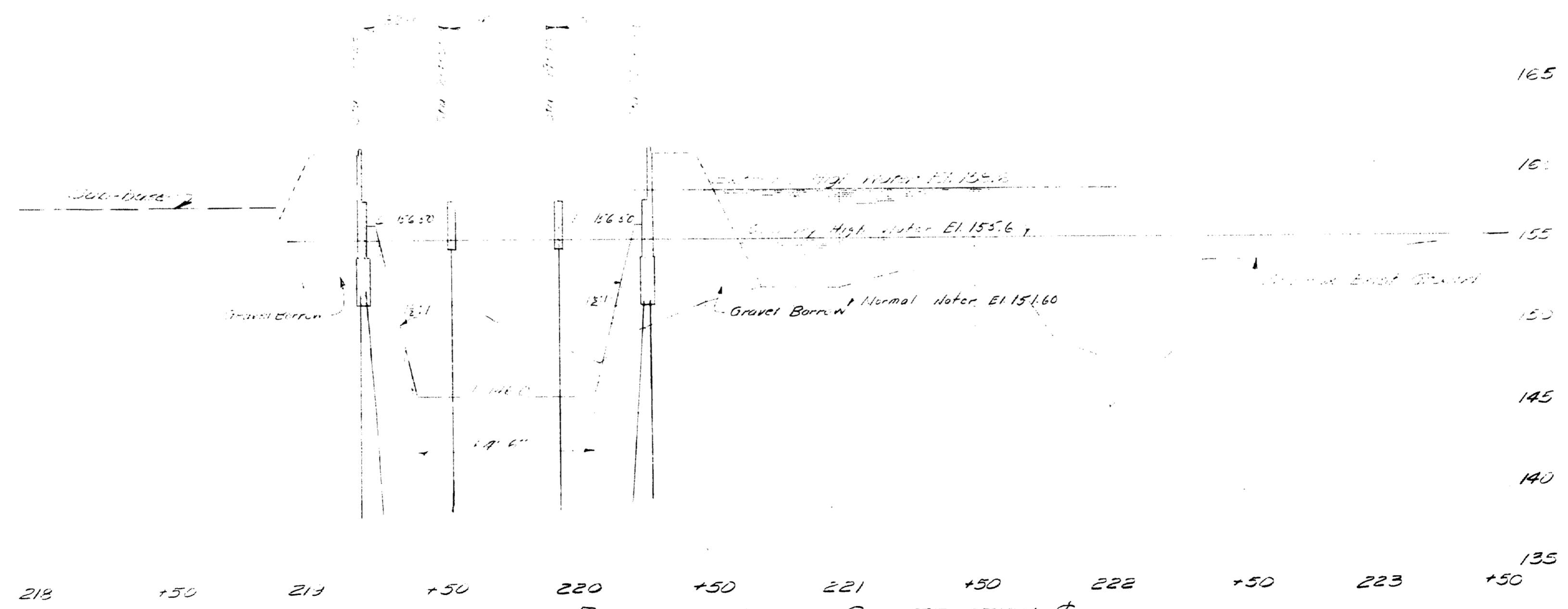
NOTES

1. Bridge is to be built on the old site of the
 old bridge at Sta. 218+50. The present bridge is
 built on the old site of the old bridge at Sta. 218+50.
 Extreme High Water - Some conditions
 are at El. 153.6. Moderate current
 at all stages.
 RAILROAD BRIDGE - About 100' downstream
 10' x 18'. At present time under clearance
 is 3.5' above water.



PLAN

See Sheet No. 3 for proposed
 stationing markers
 See Sheet No. 4 for embankments
 as constructed.

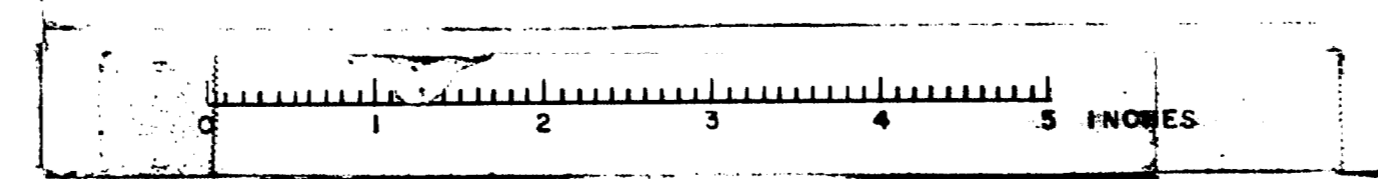


PROFILE ALONG CONSTRUCTION LINE

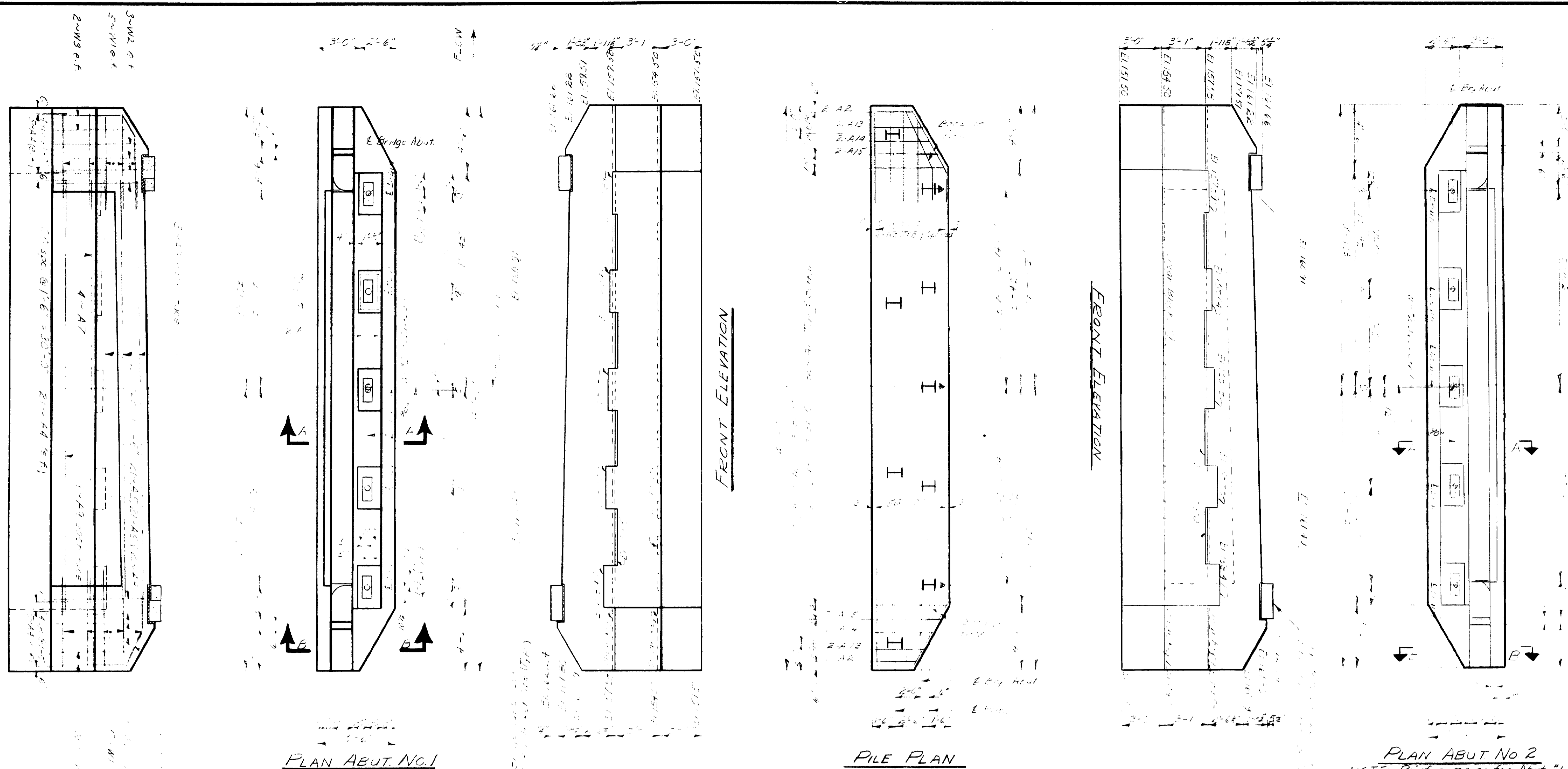
Scales - Hor. 1" = 30', Vert. 1" = 5'

NOTE: See Sheet 1 for proposed embankment.

DESIGN - TRACE - CHECK - L.F.P.	BRIDGE NO. SURVEY - PLOT -
STATE HIGHWAY COMMISSION BRIDGE DIVISION	
PARLIN STREAM BRIDGE NO. 2	
IN THE TOWNSHIP OF LONG POND SOMERSET COUNTY	
SURVEY	
SHEET 4 OF 9	AUGUSTA, MAINE MAY 1963



B. P. R. REG. NO.	STATE	PROJECT NUMBER	SHEET NO.	TOTAL SHEETS
1	MAINE			



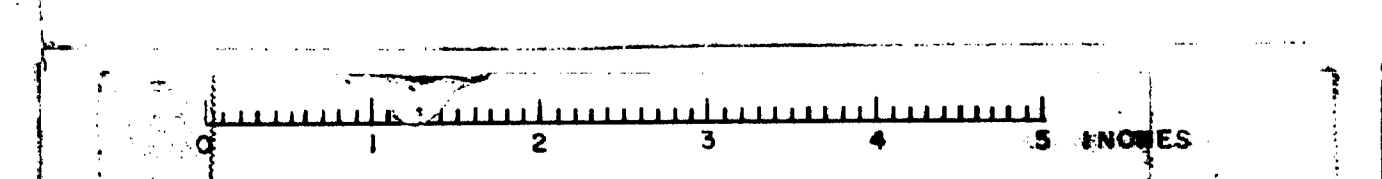
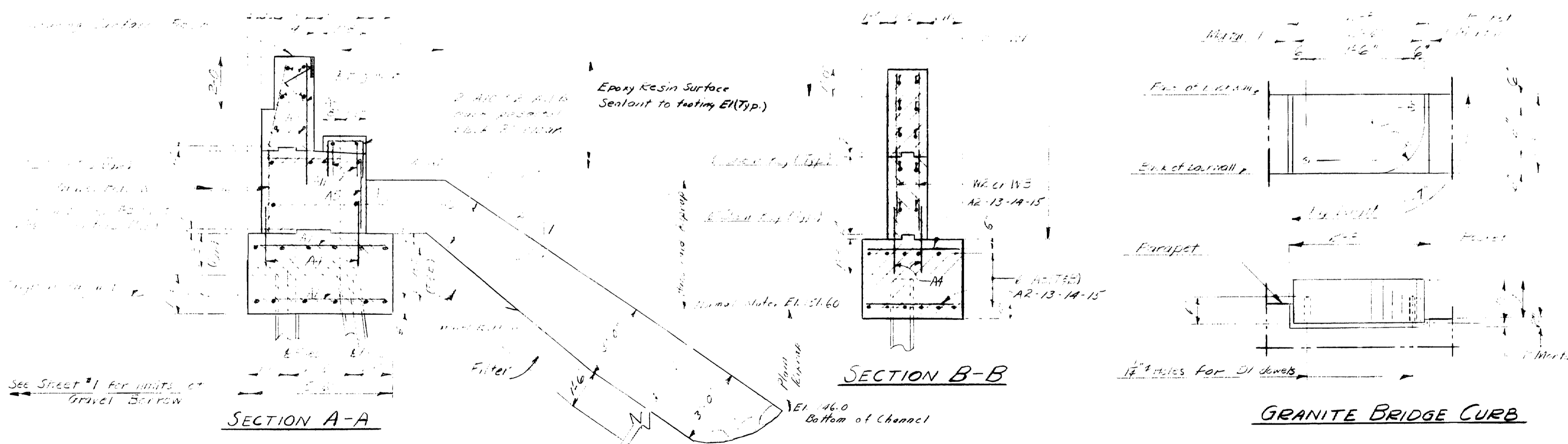
Epoxy Resin Surface Sealant (typ)

ABUTMENT NOTES

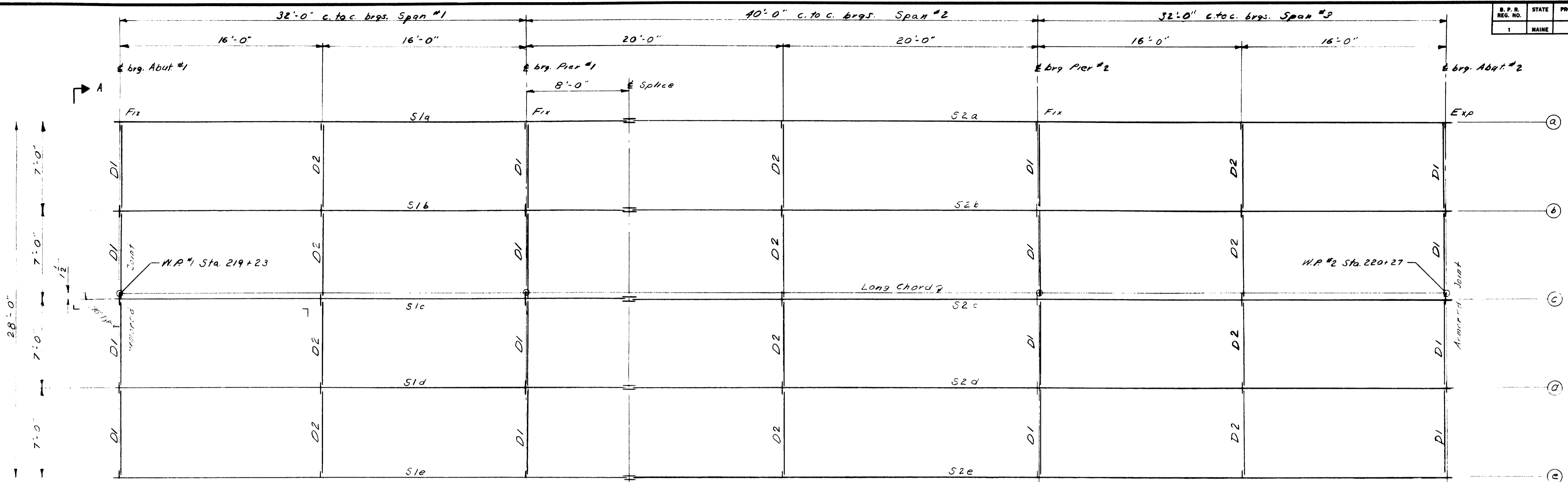
All materials to be 1/2" thick unless otherwise noted.
 Piles to be 10" dia. 40' long.
 Abutment #1: 1 pile. Estimated length 75'-0".
 Abutment #2: 2 piles. Estimated length 70'-0".
 Pile shown this side to be battered in the direction indicated by the arrow.
 Maximum pile load equals 37 tons.
 Piles to be grouted to depth of 10' below foundation level.
 Payment for incidental materials and labor incidental to contract items.

NOTE: Grout DI dowels into 1 1/2" holes in stone prior to setting stone on backwall. Drill 1 1/2" holes in backwall to suit DI dowels.
 Payment for drilling for and grouting DI dowels to be included in price for item 105-14, Reinforcing Steel, Placing.

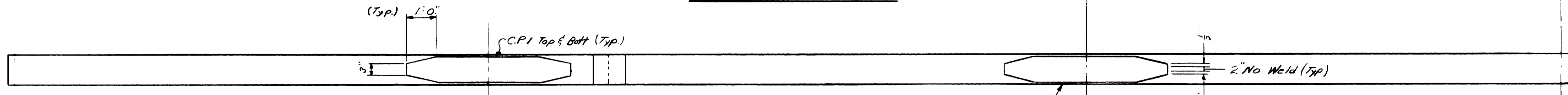
DESIGN - H.L.D. TRACE - D.E.G.H.M. CHECK - H.L.D.	BRIDGE NO. SURVEY - PLOT -
STATE HIGHWAY COMMISSION BRIDGE DIVISION	
PARLIN STREAM BRIDGE NO. 2	
IN THE TOWNSHIP OF LONG POND SOMERSET COUNTY	
ABUTMENTS	
SHEET 5 OF 9	AUGUSTA, MAINE JULY 1963



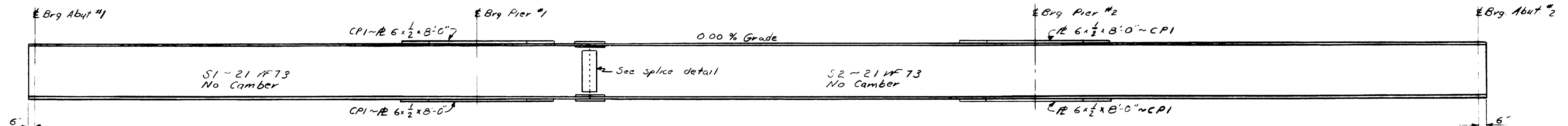
B. P. R. REG. NO.	STATE	PROJECT NUMBER	SHEET NO.	TOTAL SHEETS
1	MAINE			



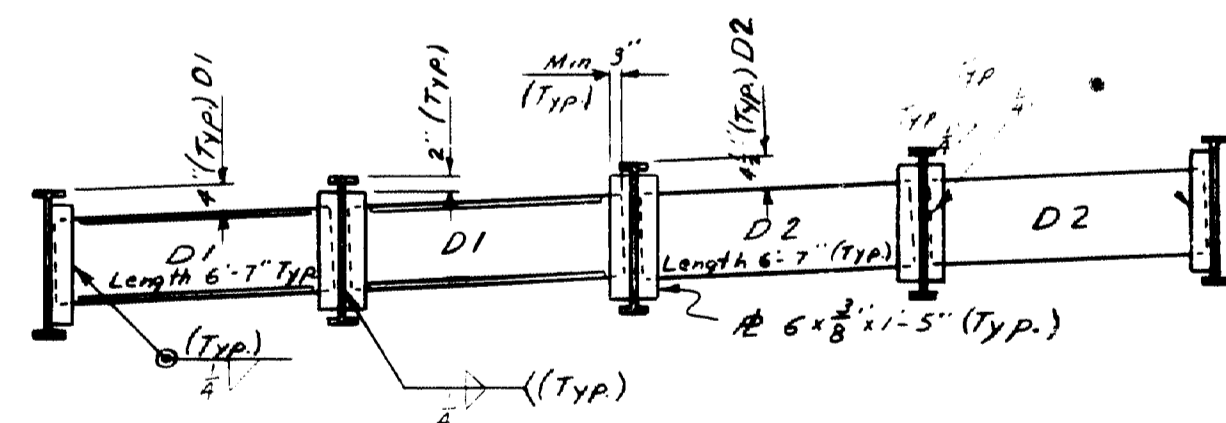
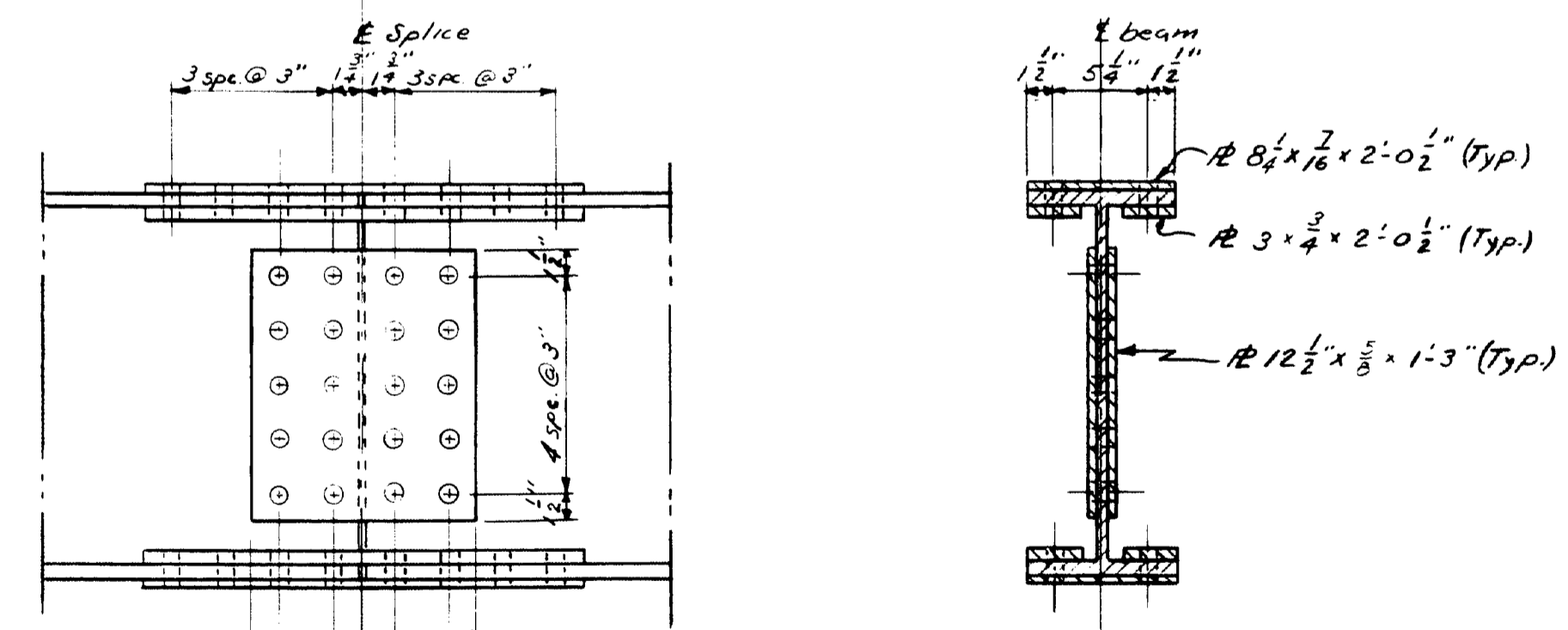
ERECTION DIAGRAM



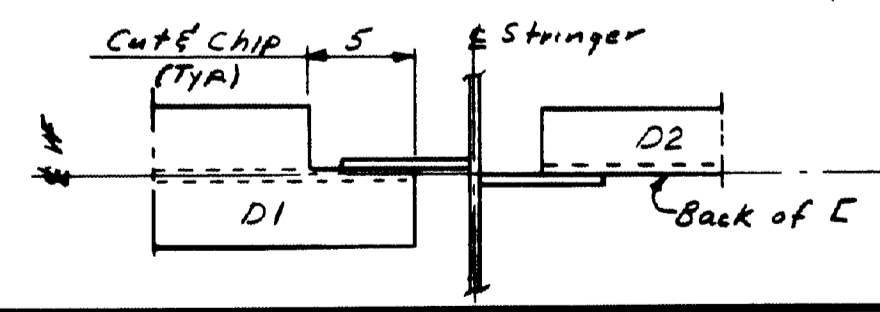
STRINGER PLAN



ELEVATION



NOTE: Diaphragms D1 ~ 12" x 27' 16" Req'd.
D2 ~ 12" x 20' 12" Req'd.



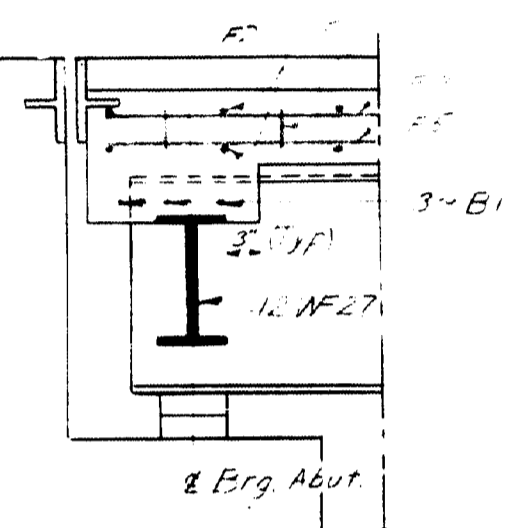
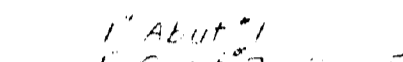
SPLICE DETAIL

NOTE: All connections use 5/8" High Strength bolts.
All holes to be 1/8" for bolts.
5 Splices Required.

1. Bridge No. 2
2. Bridge No. 2
3. Bridge No. 2
4. Bridge No. 2
5. Bridge No. 2
6. Bridge No. 2
7. Total estimated weight of structural steel is 58000 lbs. including diaphragms.

DESIGN - H. L. D.	BRIDGE NO.
TRACE - N. E. BILODEAU	SURVEY -
CHECK -	PLOT -
STATE HIGHWAY COMMISSION BRIDGE DIVISION	
PARLIN STREAM BRIDGE NO. 2	
IN THE TOWNSHIP OF LONG POND SOMERSET COUNTY	
STRUCTURAL STEEL	
SHEET 7 OF 9 AUGUSTA, MAINE MAY 1963	

A hand-drawn cross-section diagram of a bridge. The diagram shows a central pier supporting a bridge deck. The pier is labeled "3' (TYP)" and "12 WF27". The bridge deck is labeled "F1", "F3 or F4", "F2", "F5", "4-BI", and "F6". The diagram also includes a label "C.J." at the top center, indicating the center of the bridge. The drawing is done in black ink on a white background.



SECTION A-A

1. $\frac{1}{2}$ cup of sugar
 2. $\frac{1}{2}$ cup of butter
 3. $\frac{1}{2}$ cup of oil
 4. $\frac{1}{2}$ cup of milk
 5. $\frac{1}{2}$ cup of eggs
 6. $\frac{1}{2}$ cup of flour
 7. $\frac{1}{2}$ cup of baking powder
 8. $\frac{1}{2}$ cup of salt
 9. $\frac{1}{2}$ cup of vanilla
 10. $\frac{1}{2}$ cup of lemon juice
 11. $\frac{1}{2}$ cup of orange juice
 12. $\frac{1}{2}$ cup of lime juice
 13. $\frac{1}{2}$ cup of grapefruit juice
 14. $\frac{1}{2}$ cup of pineapple juice
 15. $\frac{1}{2}$ cup of apple juice
 16. $\frac{1}{2}$ cup of pear juice
 17. $\frac{1}{2}$ cup of peach juice
 18. $\frac{1}{2}$ cup of cherry juice
 19. $\frac{1}{2}$ cup of strawberry juice
 20. $\frac{1}{2}$ cup of raspberry juice
 21. $\frac{1}{2}$ cup of blueberry juice
 22. $\frac{1}{2}$ cup of blackberry juice
 23. $\frac{1}{2}$ cup of elderberry juice
 24. $\frac{1}{2}$ cup of mulberry juice
 25. $\frac{1}{2}$ cup of currant juice
 26. $\frac{1}{2}$ cup of goji berry juice
 27. $\frac{1}{2}$ cup of acai berry juice
 28. $\frac{1}{2}$ cup of pomegranate juice
 29. $\frac{1}{2}$ cup of dragon fruit juice
 30. $\frac{1}{2}$ cup of kiwi fruit juice
 31. $\frac{1}{2}$ cup of passion fruit juice
 32. $\frac{1}{2}$ cup of guava juice
 33. $\frac{1}{2}$ cup of mango juice
 34. $\frac{1}{2}$ cup of papaya juice
 35. $\frac{1}{2}$ cup of cantaloupe juice
 36. $\frac{1}{2}$ cup of honeydew juice
 37. $\frac{1}{2}$ cup of watermelon juice
 38. $\frac{1}{2}$ cup of orange juice
 39. $\frac{1}{2}$ cup of grapefruit juice
 40. $\frac{1}{2}$ cup of lime juice
 41. $\frac{1}{2}$ cup of lemon juice
 42. $\frac{1}{2}$ cup of apple juice
 43. $\frac{1}{2}$ cup of pear juice
 44. $\frac{1}{2}$ cup of peach juice
 45. $\frac{1}{2}$ cup of cherry juice
 46. $\frac{1}{2}$ cup of strawberry juice
 47. $\frac{1}{2}$ cup of raspberry juice
 48. $\frac{1}{2}$ cup of blueberry juice
 49. $\frac{1}{2}$ cup of blackberry juice
 50. $\frac{1}{2}$ cup of elderberry juice
 51. $\frac{1}{2}$ cup of mulberry juice
 52. $\frac{1}{2}$ cup of currant juice
 53. $\frac{1}{2}$ cup of goji berry juice
 54. $\frac{1}{2}$ cup of acai berry juice
 55. $\frac{1}{2}$ cup of pomegranate juice
 56. $\frac{1}{2}$ cup of dragon fruit juice
 57. $\frac{1}{2}$ cup of kiwi fruit juice
 58. $\frac{1}{2}$ cup of passion fruit juice
 59. $\frac{1}{2}$ cup of guava juice
 60. $\frac{1}{2}$ cup of mango juice
 61. $\frac{1}{2}$ cup of papaya juice
 62. $\frac{1}{2}$ cup of cantaloupe juice
 63. $\frac{1}{2}$ cup of honeydew juice
 64. $\frac{1}{2}$ cup of watermelon juice
 65. $\frac{1}{2}$ cup of orange juice
 66. $\frac{1}{2}$ cup of grapefruit juice
 67. $\frac{1}{2}$ cup of lime juice
 68. $\frac{1}{2}$ cup of lemon juice
 69. $\frac{1}{2}$ cup of apple juice
 70. $\frac{1}{2}$ cup of pear juice
 71. $\frac{1}{2}$ cup of peach juice
 72. $\frac{1}{2}$ cup of cherry juice
 73. $\frac{1}{2}$ cup of strawberry juice
 74. $\frac{1}{2}$ cup of raspberry juice
 75. $\frac{1}{2}$ cup of blueberry juice
 76. $\frac{1}{2}$ cup of blackberry juice
 77. $\frac{1}{2}$ cup of elderberry juice
 78. $\frac{1}{2}$ cup of mulberry juice
 79. $\frac{1}{2}$ cup of currant juice
 80. $\frac{1}{2}$ cup of goji berry juice
 81. $\frac{1}{2}$ cup of acai berry juice
 82. $\frac{1}{2}$ cup of pomegranate juice
 83. $\frac{1}{2}$ cup of dragon fruit juice
 84. $\frac{1}{2}$ cup of kiwi fruit juice
 85. $\frac{1}{2}$ cup of passion fruit juice
 86. $\frac{1}{2}$ cup of guava juice
 87. $\frac{1}{2}$ cup of mango juice
 88. $\frac{1}{2}$ cup of papaya juice
 89. $\frac{1}{2}$ cup of cantaloupe juice
 90. $\frac{1}{2}$ cup of honeydew juice
 91. $\frac{1}{2}$ cup of watermelon juice
 92. $\frac{1}{2}$ cup of orange juice
 93. $\frac{1}{2}$ cup of grapefruit juice
 94. $\frac{1}{2}$ cup of lime juice
 95. $\frac{1}{2}$ cup of lemon juice
 96. $\frac{1}{2}$ cup of apple juice
 97. $\frac{1}{2}$ cup of pear juice
 98. $\frac{1}{2}$ cup of peach juice
 99. $\frac{1}{2}$ cup of cherry juice
 100. $\frac{1}{2}$ cup of strawberry juice
 101. $\frac{1}{2}$ cup of raspberry juice
 102. $\frac{1}{2}$ cup of blueberry juice
 103. $\frac{1}{2}$ cup of blackberry juice
 104. $\frac{1}{2}$ cup of elderberry juice
 105. $\frac{1}{2}$ cup of mulberry juice
 106. $\frac{1}{2}$ cup of currant juice
 107. $\frac{1}{2}$ cup of goji berry juice
 108. $\frac{1}{2}$ cup of acai berry juice
 109. $\frac{1}{2}$ cup of pomegranate juice
 110. $\frac{1}{2}$ cup of dragon fruit juice
 111. $\frac{1}{2}$ cup of kiwi fruit juice
 112. $\frac{1}{2}$ cup of passion fruit juice
 113. $\frac{1}{2}$ cup of guava juice
 114. $\frac{1}{2}$ cup of mango juice
 115. $\frac{1}{2}$ cup of papaya juice
 116. $\frac{1}{2}$ cup of cantaloupe juice
 117. $\frac{1}{2}$ cup of honeydew juice
 118. $\frac{1}{2}$ cup of watermelon juice
 119. $\frac{1}{2}$ cup of orange juice
 120. $\frac{1}{2}$ cup of grapefruit juice
 121. $\frac{1}{2}$ cup of lime juice
 122. $\frac{1}{2}$ cup of lemon juice
 123. $\frac{1}{2}$ cup of apple juice
 124. $\frac{1}{2}$ cup of pear juice
 125. $\frac{1}{2}$ cup of peach juice
 126. $\frac{1}{2}$ cup of cherry juice
 127. $\frac{1}{2}$ cup of strawberry juice
 128. $\frac{1}{2}$ cup of raspberry juice
 129. $\frac{1}{2}$ cup of blueberry juice
 130. $\frac{1}{2}$ cup of blackberry juice
 131. $\frac{1}{2}$ cup of elderberry juice
 132. $\frac{1}{2}$ cup of mulberry juice
 133. $\frac{1}{2}$ cup of currant juice
 134. $\frac{1}{2}$ cup of goji berry juice
 135. $\frac{1}{2}$ cup of acai berry juice
 136. $\frac{1}{2}$ cup of pomegranate juice
 137. $\frac{1}{2}$ cup of dragon fruit juice
 138. $\frac{1}{2}$ cup of kiwi fruit juice
 139. $\frac{1}{2}$ cup of passion fruit juice
 140. $\frac{1}{2}$ cup of guava juice
 141. $\frac{1}{2}$ cup of mango juice
 142. $\frac{1}{2}$ cup of papaya juice
 143. $\frac{1}{2}$ cup of cantaloupe juice
 144. $\frac{1}{2}$ cup of honeydew juice
 145. $\frac{1}{2}$ cup of watermelon juice
 146. $\frac{1}{2}$ cup of orange juice
 147. $\frac{1}{2}$ cup of grapefruit juice
 148. $\frac{1}{2}$ cup of lime juice
 149. $\frac{1}{2}$ cup of lemon juice
 150. $\frac{1}{2}$ cup of apple juice
 151. $\frac{1}{2}$ cup of pear juice
 152. $\frac{1}{2}$ cup of peach juice
 153. $\frac{1}{2}$ cup of cherry juice
 154. $\frac{1}{2}$ cup of strawberry juice
 155. $\frac{1}{2}$ cup of raspberry juice
 156. $\frac{1}{2}$ cup of blueberry juice
 157. $\frac{1}{2}$ cup of blackberry juice
 158. $\frac{1}{2}$ cup of elderberry juice
 159. $\frac{1}{2}$ cup of mulberry juice
 160. $\frac{1}{2}$ cup of currant juice
 161. $\frac{1}{2}$ cup of goji berry juice
 162. $\frac{1}{2}$ cup of acai berry juice
 163. $\frac{1}{2}$ cup of pomegranate juice
 164. $\frac{1}{2}$ cup of dragon fruit juice
 165. $\frac{1}{2}$ cup of kiwi fruit juice
 166. $\frac{1}{2}$ cup of passion fruit juice
 167. $\frac{1}{2}$ cup of guava juice
 168. $\frac{1}{2}$ cup of mango juice
 169. $\frac{1}{2}$ cup of papaya juice
 170. $\$

concrete run runs to be precast.

The new 12 ft run bars are to be covered with a layer of heavy insulating material and the top of the run bars is covered with a 2 in. thick concrete to provide a finished surface.

For drain detail see
Standard Details BD104-62
6 - Drains Req.

For armored joint detail
see Standard Detail BD104-62
2-Units type A & 2-Units type B
Required

Supplying and placing of bridge
pavement for type "A" Guard Railings
by Item 701 - AC

BRIDGE NO.	
SURVEY-	
PLOT-	

DESIGN- <i>H.L.D.</i>	BRIDGE NO.
TRACE- <i>DEG</i>	SURVEY-
CHECK- <i>468</i>	PLOT-

STATE HIGHWAY COMMISSION
BRIDGE DIVISION

PART IN STREAM BRIDGE NO. 2

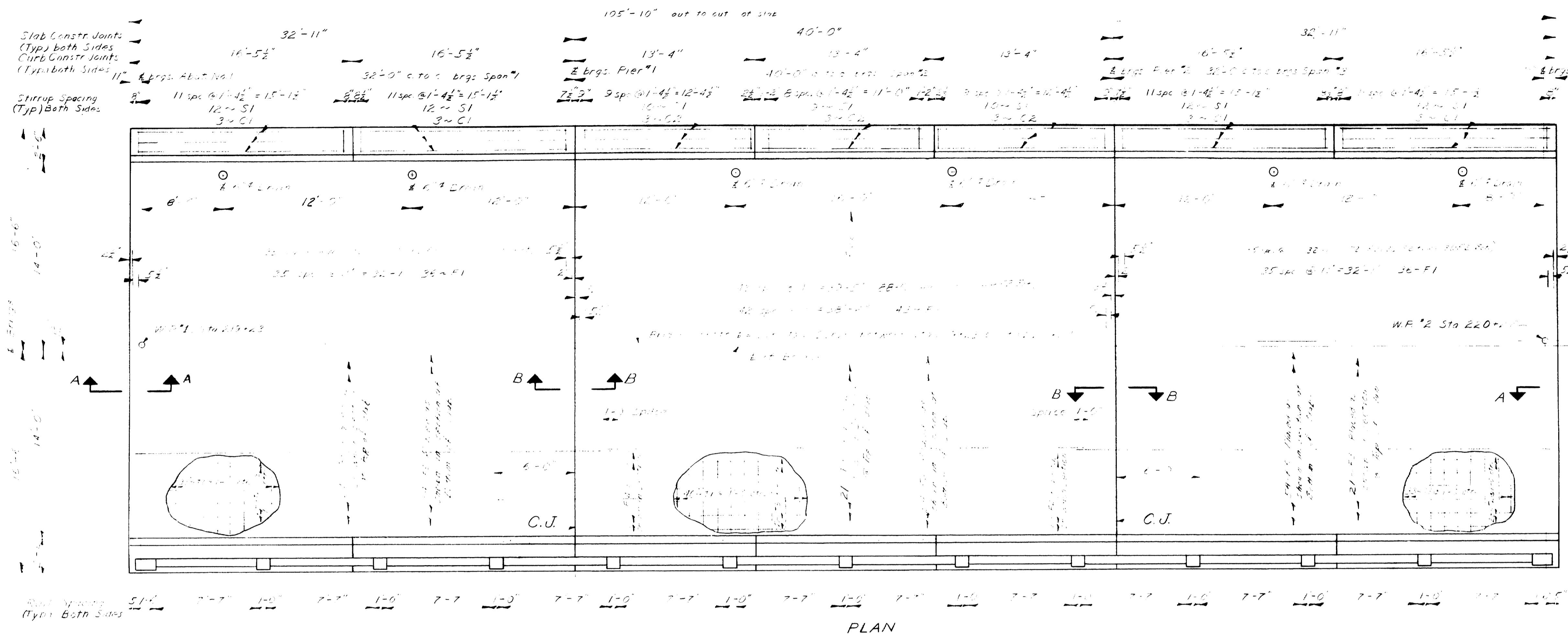
IN THE TOWNSHIP OF

LONG POND
SOMERSET COUNTY

SUPER STRUCTURE

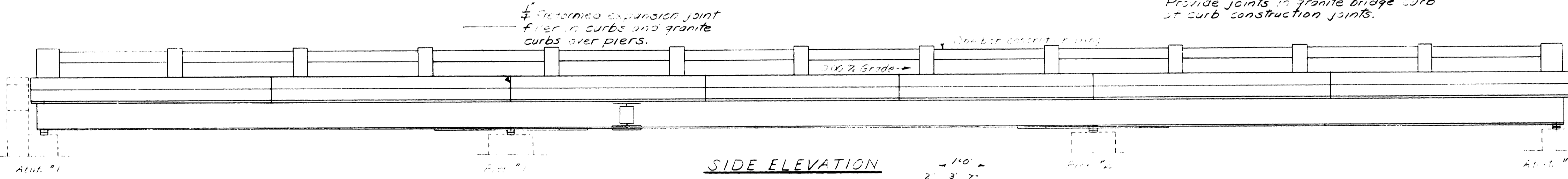
SHEET 3 OF 9 AUGUSTA, MAINE JULY 1963

91-64

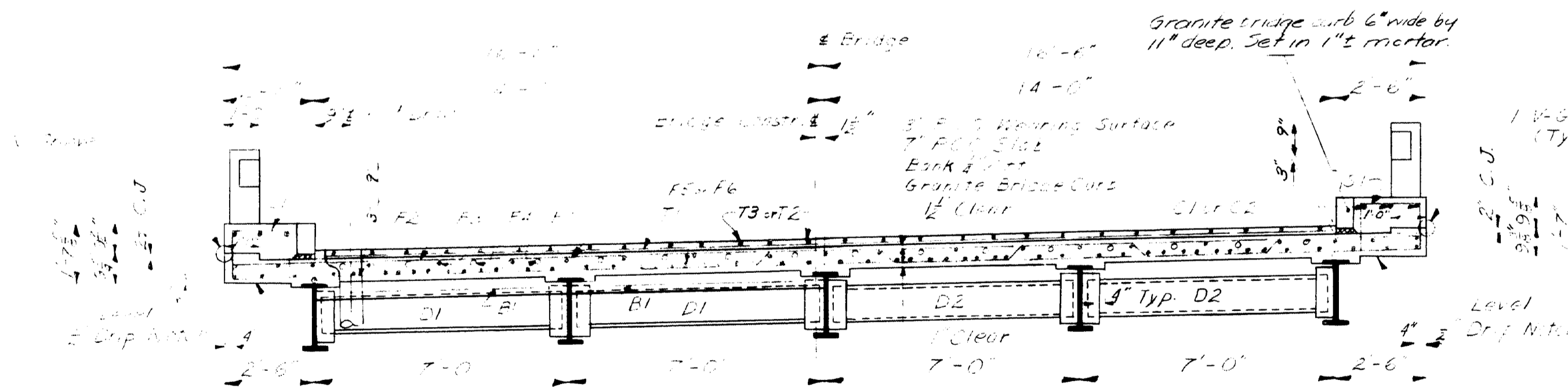


PLAN

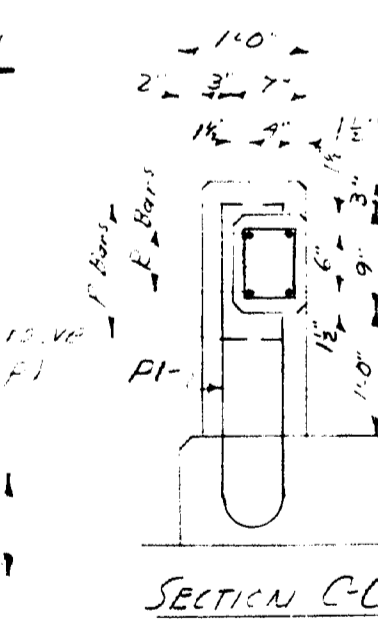
Form "V" groove on outside face of curb and slab at each vertical joint. Provide joints in granite bridge curb at curb construction joints.



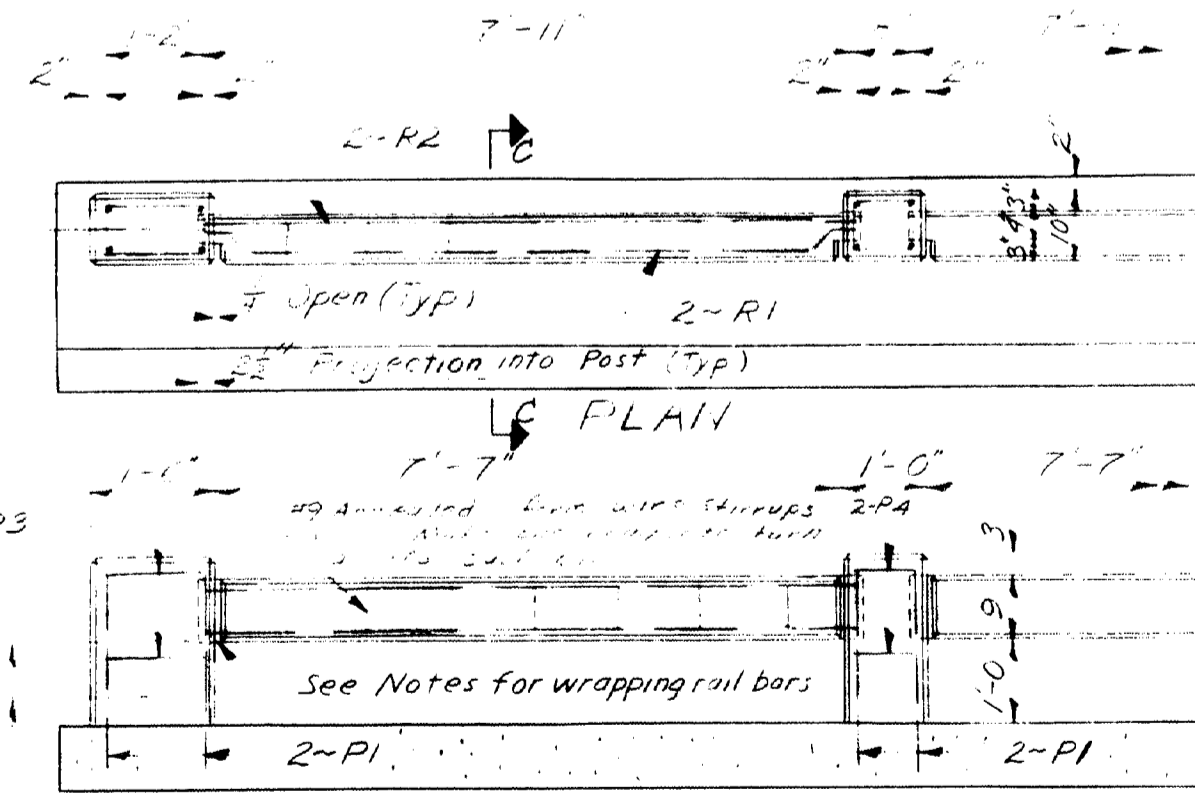
SIDE ELEVATION



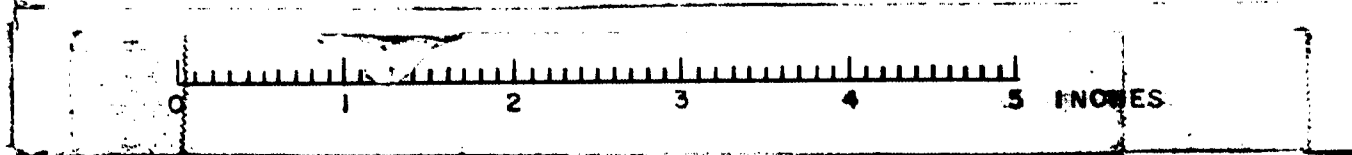
TYPICAL TRANSVERSE SECTION



SECTION C-C

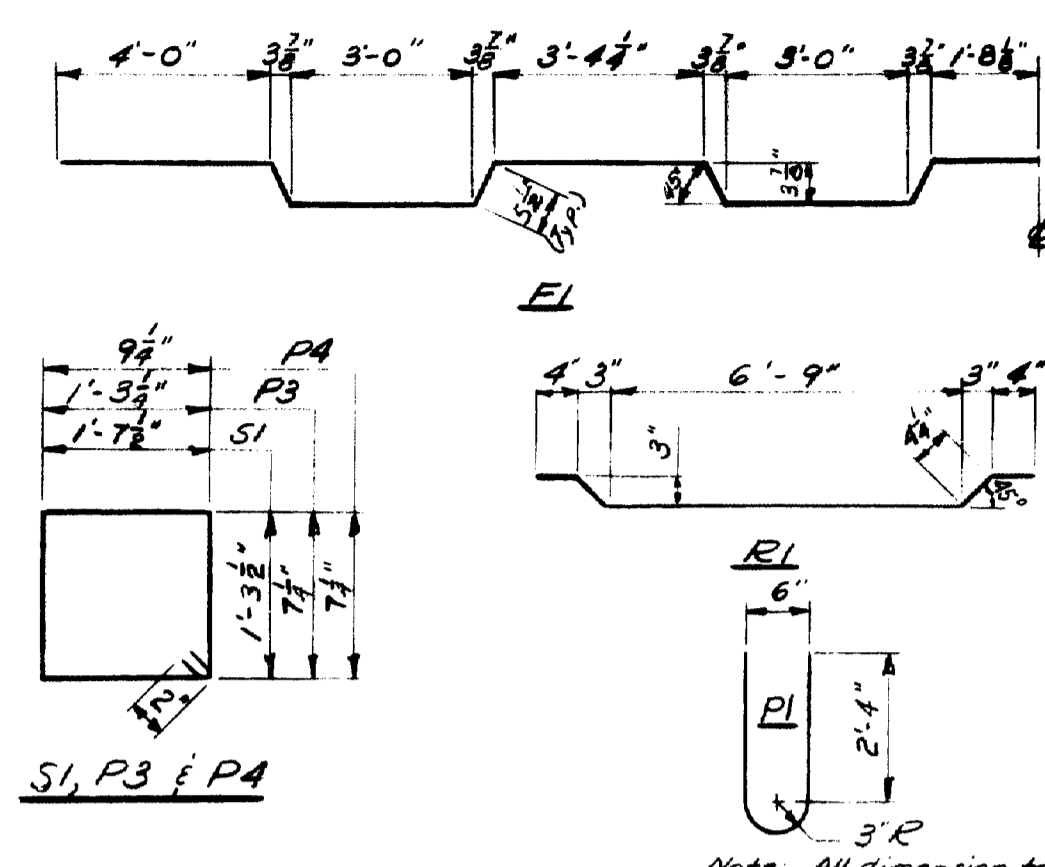


ELEVATION
RAIL DETAILS

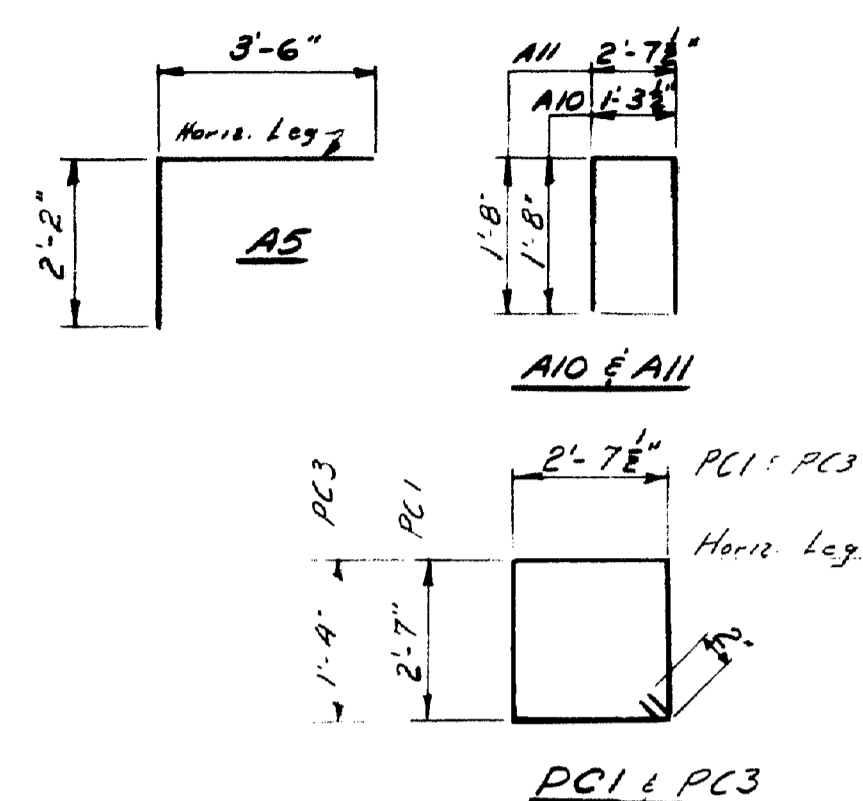


B. P. R. REG. NO.	STATE	PROJECT NUMBER	SHEET NO.	TOTAL SHEETS
1	MAINE			

PIERS & ABUTMENTS



Note: All dimension to ϕ of bars



Note: All dimensions to ϵ of bars.

BENT					BENT				
Mark	Size	Number	Length	Location	Mark	Size	Number	Length	Location
F1	"5	115	33'-8"	Superstr. all spans	PC1	"4	28	10'-3"	Pier cap both piers
S1	"4	154	6'-2"	Curbs all spans	A10	"	20	4'-9"	Abut. bearing pedestals
P1	"6	52	5'-5"	Rail Posts	A11	"4	20	5'-0"	" "
P3	"	8	4'-1"	" " "End	A5	"5	42	5'-8"	" bridge seats
P4	"	44	3'-1"	" " "Interior					
R1	"4	48	8'-1 1/2"	Rail bars	PC3	"4	26	8'-3"	Pier Cap (Both Piers)
STRAIGHT					STRAIGHT				
T1	"3	106	27'-8"	Wearing Surface all spans	A9	"4	16	30'-6"	Backwall & br seats horizontal
T2	"3	112	16'-9"	Wearing Surface spans 1 & 3 spl.	A6	"5	42	6'-2"	Backwall vertical
T3	"3	56	20'-4"	Wearing Surface span "2 spl.	A7	"	8	30'-6"	Br. seats horizontal
F3	"4	65	35'-10"	Slab all spans Top of Slab	A8	"	42	4'-11"	Backwall vertical
F4	"	32	12'-0"	Slab all spans Top of Slab	W1	"	40	5'-9"	Wings horizontal
C1	"	24	16'-0"	Curbs spans "1 & "3	W2	"	24	6'-2"	" vertical
C2	"	18	13'-0"	Curbs span "2	W3	"5	16	5'-0"	" "
R2	"4	48	7'-11"	Rail bars	A1	"6	128	5'-0"	Abut. footings
F2	"5	232	32'-8"	Slab all spans	A2	"4	8	2'-9"	" "
B1	"6	56	6'-6"	Diaphragms abuts. & piers	A3	"6	48	20'-6"	" " Spliced
F5	"4	108	32'-8"	Distribution Steel 3 ft Slab span 1-3	A4	"5	124	5'-0"	" "
F6	"4	54	39'-9"	Distribution Steel Bottom Slab span 2	D1	"6	3	1'-0"	Granite curb to abut.
					PC2	"8	24	30'-6"	Pier cap both piers
					A12	"4	2	2'-9"	Abutment Footings
					A14	"6	2	3'-10"	
					"15"	"6	8	4'-3"	

U. S. GO. NO. 44-308 8811

DESIGN-- <i>H.L.D.</i>	BRIDGE NO.
TRACE--	SURVEY--
CHECK-- <i>H.L.D.</i>	PLOT--

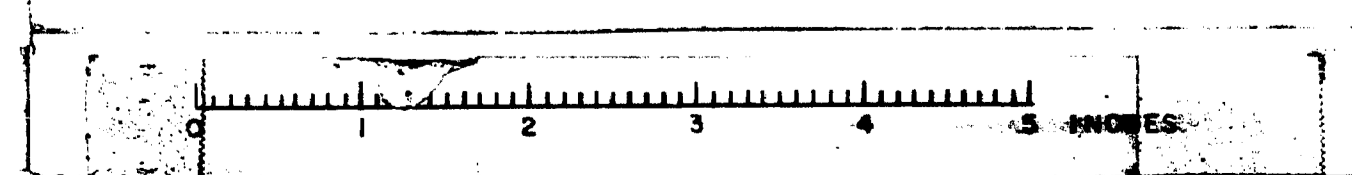
STATE HIGHWAY COMMISSION
BRIDGE DIVISION

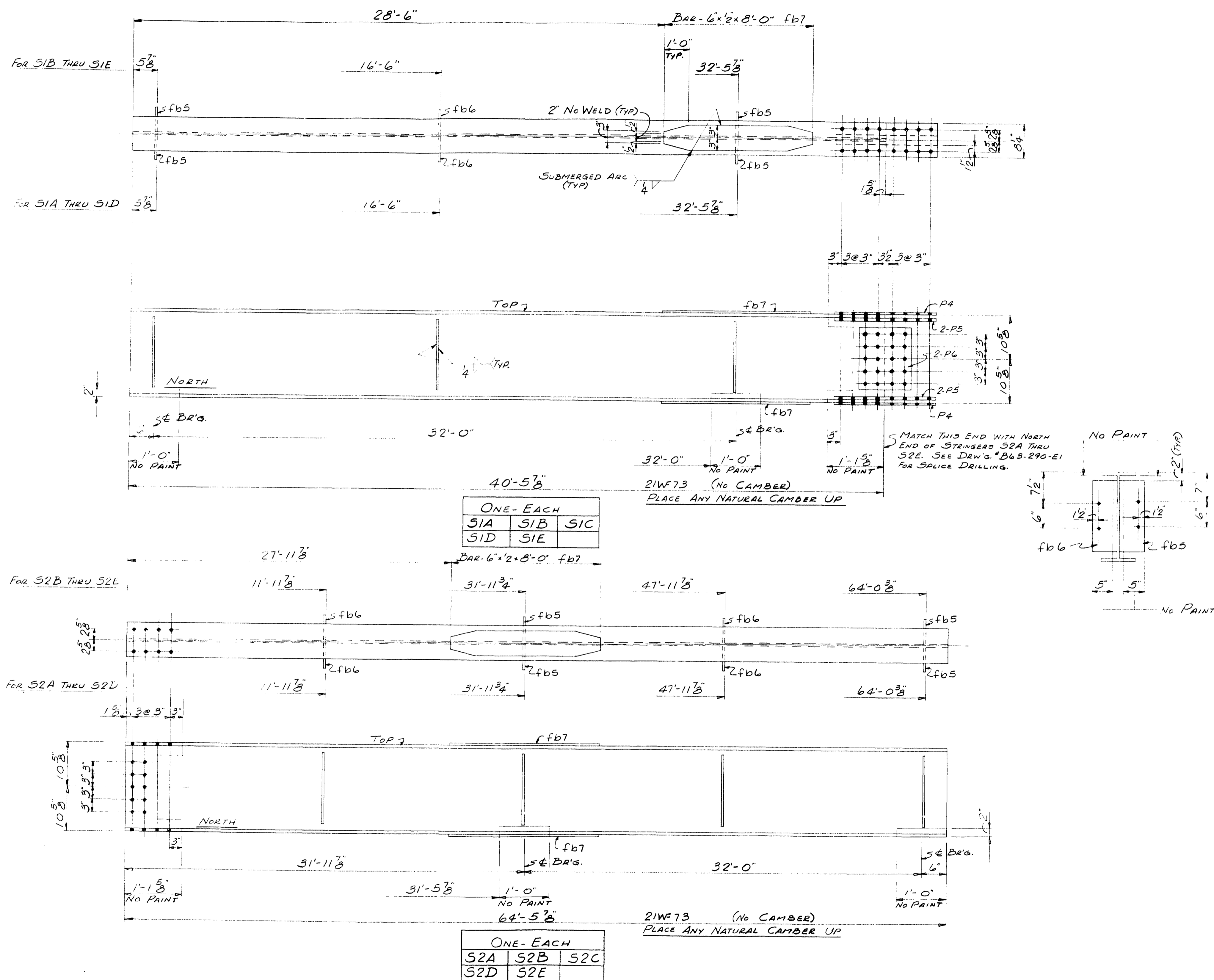
PARLIN STREAM BRIDGE NO. 2

IN THE TOWNSHIP OF
LONG POND
SOMERSET COUNTY
REINFORCING STEEL

SHEET *9* OF *9*. AUGUSTA, MAINE JULY 196*6*

91-65





SHIP		BILL OF MATERIAL				DWG. B63-290-54
MARK	NO.	MARK	SHAPE	LENGTH	WT.	REMARKS
S1A	1		21WF73	40' 5 3/8"		A36
S1B	1		Do	40' 5 3/8"		
S1C	1		Do	40' 5 3/8"		
S1D	1		Do	40' 5 3/8"		
S1E	1		Do	40' 5 3/8"		
S2A	1		Do	64' 5 3/8"		
S2B	1		Do	64' 5 3/8"		
S2C	1		Do	64' 5 3/8"		
S2D	1		Do	64' 5 3/8"		
S2E	1		Do	64' 5 3/8"		
20	fb7	BAR-6"x2"	8	0		
10	P4	P-8 1/2"x7 1/2"	2	0 1/2		
20	P5	P-3"x3 1/2"	2	0 1/2		
10	P6	P-12 1/2"x3 1/2"	1	3		
32	fb5	BAR-6"x3 1/2"	1	5		A7 OR A36
24	fb6	Do	1	5		Do
FIELD	26B	3/8" H.S. BOLT	0	34		A325
Do	26B	3/8" H.S. WASHER				
Do	118	3/4" M. BOLT	0	1 3/4		

SHOP CONNECTIONS: WELD (E70 ELECTRODE)
 FIELD CONNECTIONS: WELD # 3/8" H.S. BOLT
 HOLES: 1 1/2" diameter
 PAINT: STATE OF MAINE SPEC'S.

APP'D. AS NOTED 3-2-64

STRINGERS	
PRINT ISSUE	
3 CUST	3-4-64
5 SHOP	3-4-64
2 F.A.	2-27-64
DRAWN	2-24-64 R.A.M.
REVISION	
REVISION	
REVISION	

Pancroft & Martin Inc.
 Brewer, Maine

PARLIN STREAM BRIDGE #2
 LONG FOND - SOMERSET COUNTY

CUSTOMER GIANCHETTE BROTHERS
 DESIGNER STATE HIGHWAY COMM.

ORDER VERBAL DWG. B63-290-54

